

Product datasheet for **TA339042**

CRTAP Rabbit Polyclonal Antibody

Product data:

Product Type:	Primary Antibodies
Applications:	WB
Recommended Dilution:	WB
Reactivity:	Human
Host:	Rabbit
Isotype:	IgG
Clonality:	Polyclonal
Immunogen:	The immunogen for anti-CRTAP antibody: synthetic peptide directed towards the N terminal of human CRTAP. Synthetic peptide located within the following region: RLFGLLRRAHCLKRCKQGLPAFRQSQPSREVLADFQRREPYKFLQFAYF
Formulation:	Liquid. Purified antibody supplied in 1x PBS buffer with 0.09% (w/v) sodium azide and 2% sucrose. <i>Note that this product is shipped as lyophilized powder to China customers.</i>
Concentration:	lot specific
Purification:	Protein A purified
Conjugation:	Unconjugated
Storage:	Store at -20°C as received.
Stability:	Stable for 12 months from date of receipt.
Predicted Protein Size:	44 kDa
Gene Name:	cartilage associated protein
Database Link:	NP_006362 Entrez Gene 10491 Human O75718
Background:	The protein encoded by this gene is similar to the chicken and mouse CRTAP genes. The encoded protein is a scaffolding protein that may influence the activity of at least one member of the cytohesin/ARNO family in response to specific cellular stimuli. Defects in this gene are associated with osteogenesis imperfecta, a connective tissue disorder characterized by bone fragility and low bone mass. [provided by RefSeq, Jul 2008]



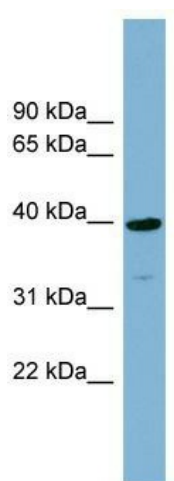
[View online »](#)

Synonyms: CASP; LEPREL3; OI7; P3H5

Note: Immunogen Sequence Homology: Dog: 100%; Pig: 100%; Rat: 100%; Horse: 100%; Human: 100%; Mouse: 100%; Bovine: 100%; Rabbit: 100%; Guinea pig: 100%; Zebrafish: 86%

Protein Families: Secreted Protein, Transmembrane

Product images:



WB Suggested Anti-CRTAP Antibody Titration: 0.2-1 ug/ml; Positive Control: COLO205 cell lysate