

## Product datasheet for **TA339041**

### LRRN5 (LRRN2) Rabbit Polyclonal Antibody

#### Product data:

Product Type:	Primary Antibodies
Applications:	WB
Recommended Dilution:	WB
Reactivity:	Human
Host:	Rabbit
Isotype:	IgG
Clonality:	Polyclonal
Immunogen:	The immunogen for anti-LRRN2 antibody: synthetic peptide directed towards the middle region of human LRRN2. Synthetic peptide located within the following region: RVPRRALEQVPLKFLDLNKNPLQRVGPGDFANMLHLKELGLNNMEELVS
Formulation:	Liquid. Purified antibody supplied in 1x PBS buffer with 0.09% (w/v) sodium azide and 2% sucrose. <i>Note that this product is shipped as lyophilized powder to China customers.</i>
Concentration:	lot specific
Purification:	Protein A purified
Conjugation:	Unconjugated
Storage:	Store at -20°C as received.
Stability:	Stable for 12 months from date of receipt.
Predicted Protein Size:	79 kDa
Gene Name:	leucine rich repeat neuronal 2
Database Link:	<a href="#">NP_006329</a> <a href="#">Entrez Gene 10446 Human</a> <a href="#">O75325</a>



[View online »](#)

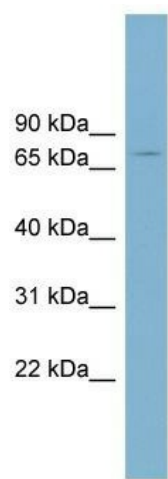
**Background:** The protein encoded by this gene belongs to the leucine-rich repeat superfamily. This gene was found to be amplified and overexpressed in malignant gliomas. The encoded protein has homology with other proteins that function as cell-adhesion molecules or as signal transduction receptors and is a candidate for the target gene in the 1q32.1 amplicon in malignant gliomas. Two alternatively spliced transcript variants encoding the same protein have been described for this gene. [provided by RefSeq, Jul 2008]

**Synonyms:** FIGLER7; GAC1; LRANK1; LRRN5

**Note:** Immunogen Sequence Homology: Dog: 100%; Pig: 100%; Rat: 100%; Horse: 100%; Human: 100%; Mouse: 100%; Bovine: 100%

**Protein Families:** Druggable Genome, Transmembrane

### Product images:



WB Suggested Anti-LRRN2 Antibody Titration: 0.2-1 ug/ml; Positive Control: THP-1 cell lysate