

Product datasheet for **TA339034**

NELL2 Rabbit Polyclonal Antibody

Product data:

Product Type:	Primary Antibodies
Applications:	WB
Recommended Dilution:	WB
Reactivity:	Human
Host:	Rabbit
Isotype:	IgG
Clonality:	Polyclonal
Immunogen:	The immunogen for anti-NELL2 antibody: synthetic peptide directed towards the N terminal of human NELL2. Synthetic peptide located within the following region: MESRVLLRTFCLIFGLGAVWGLGVDPQLQIDVLTELELGESTTGVRQVPG
Formulation:	Liquid. Purified antibody supplied in 1x PBS buffer with 0.09% (w/v) sodium azide and 2% sucrose. <i>Note that this product is shipped as lyophilized powder to China customers.</i>
Concentration:	lot specific
Purification:	Protein A purified
Conjugation:	Unconjugated
Storage:	Store at -20°C as received.
Stability:	Stable for 12 months from date of receipt.
Predicted Protein Size:	91 kDa
Gene Name:	neural EGFL like 2
Database Link:	NP_006150 Entrez Gene 4753 Human Q99435



[View online »](#)

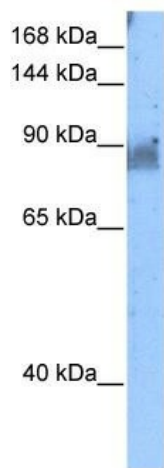
Background: The protein encoded by this gene is a glycoprotein containing several von Willebrand factor C domains and epidermal growth factor (EGF)-like domains. The encoded protein acts as a homotrimer and is found in the cytoplasm. Several variants encoding a few different isoforms exist, and at least one isoform appears to be a secreted protein. Studies in mouse suggest that this protein plays a role in neural cell growth and differentiation as well as in oncogenesis. [provided by RefSeq, Feb 2009]

Synonyms: NRP2

Note: Immunogen Sequence Homology: Pig: 100%; Rat: 100%; Horse: 100%; Human: 100%; Mouse: 100%; Bovine: 100%; Rabbit: 100%; Guinea pig: 93%; Dog: 86%

Protein Families: Secreted Protein, Transmembrane

Product images:



WB Suggested Anti-NELL2 Antibody Titration: 5.0 ug/ml; Positive Control: Transfected 293T