

Product datasheet for **TA339033**

Man2a2 Rabbit Polyclonal Antibody

Product data:

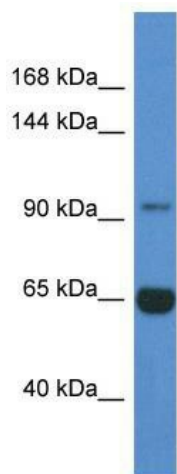
Product Type:	Primary Antibodies
Applications:	WB
Recommended Dilution:	WB
Reactivity:	Mouse
Host:	Rabbit
Isotype:	IgG
Clonality:	Polyclonal
Immunogen:	The immunogen for anti-Man2a2 antibody: synthetic peptide corresponding to a region of Mouse. Synthetic peptide located within the following region: PQDCQFALGGRGQKPELQMLTVSEDLFPDNVEGGVWRQGFDISYSPNDWD
Formulation:	Liquid. Purified antibody supplied in 1x PBS buffer with 0.09% (w/v) sodium azide and 2% sucrose. <i>Note that this product is shipped as lyophilized powder to China customers.</i>
Concentration:	lot specific
Purification:	Protein A purified
Conjugation:	Unconjugated
Storage:	Store at -20°C as received.
Stability:	Stable for 12 months from date of receipt.
Predicted Protein Size:	93 kDa
Gene Name:	mannosidase 2, alpha 2
Database Link:	NP_766491 Entrez Gene 140481 Mouse Q8BRK9
Background:	Catalyzes the first committed step in the biosynthesis of complex N-glycans. It controls conversion of high mannose to complex N-glycans; the final hydrolytic step in the N-glycan maturation pathway.
Synonyms:	HsT19662; MANA2X



[View online »](#)

Note: Immunogen Sequence Homology: Dog: 100%; Pig: 100%; Rat: 100%; Human: 100%; Mouse: 100%; Rabbit: 100%; Guinea pig: 100%; Horse: 93%; Bovine: 93%

Product images:



WB Suggested Anti-Man2a2 Antibody; Titration: 1.0 ug/ml; Positive Control: Mouse Liver