

Product datasheet for **TA339028**

ZMPSTE24 Rabbit Polyclonal Antibody

Product data:

Product Type:	Primary Antibodies
Applications:	WB
Recommended Dilution:	WB
Reactivity:	Human
Host:	Rabbit
Isotype:	IgG
Clonality:	Polyclonal
Immunogen:	The immunogen for anti-ZMPSTE24 antibody: synthetic peptide directed towards the N terminal of human ZMPSTE24. Synthetic peptide located within the following region: LYSETEGTLILLFGGIPYLWRLSGRFCGYAGFGPEYEITQSLVLLLATL
Formulation:	Liquid. Purified antibody supplied in 1x PBS buffer with 0.09% (w/v) sodium azide and 2% sucrose.
Concentration:	lot specific
Purification:	Protein A purified
Conjugation:	Unconjugated
Storage:	Store at -20°C as received.
Stability:	Stable for 12 months from date of receipt.
Predicted Protein Size:	55 kDa
Gene Name:	zinc metalloproteinase STE24
Database Link:	NP_005848 Entrez Gene 10269 Human O75844
Background:	This gene encodes a member of the peptidase M48A family. The encoded protein is a zinc metalloproteinase involved in the two step post-translational proteolytic cleavage of carboxy terminal residues of farnesylated prelamin A to form mature lamin A. Mutations in this gene have been associated with mandibuloacral dysplasia and restrictive dermopathy. [provided by RefSeq, Jul 2008]
Synonyms:	FACE-1; FACE1; HGPS; PRO1; STE24; Ste24p

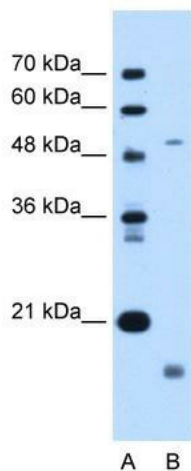


[View online »](#)

Note: Immunogen Sequence Homology: Horse: 100%; Human: 100%; Bovine: 100%; Rabbit: 100%; Dog: 93%; Rat: 91%; Zebrafish: 90%; Pig: 86%; Guinea pig: 86%; Mouse: 79%

Protein Families: Druggable Genome, Protease, Transmembrane

Product images:



WB Suggested Anti-ZMPSTE24 Antibody Titration:
0.2-1 ug/ml; Positive Control: Jurkat cell lysate