

## Product datasheet for TA339026

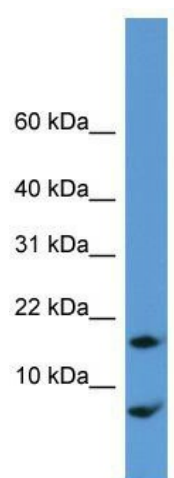
### Cnih1 Rabbit Polyclonal Antibody

#### Product data:

Product Type:	Primary Antibodies
Applications:	WB
Recommended Dilution:	WB
Reactivity:	Rat, Mouse
Host:	Rabbit
Isotype:	IgG
Clonality:	Polyclonal
Immunogen:	The immunogen for anti-Cnih antibody: synthetic peptide corresponding to a region of Rat. Synthetic peptide located within the following region: AFTFAAFCYMLALLLTAALIFFAIWHIIAFDELKTDYKNPIDQCNTLNPL
Formulation:	Liquid. Purified antibody supplied in 1x PBS buffer with 0.09% (w/v) sodium azide and 2% sucrose. <i>Note that this product is shipped as lyophilized powder to China customers.</i>
Concentration:	lot specific
Purification:	Protein A purified
Conjugation:	Unconjugated
Storage:	Store at -20°C as received.
Stability:	Stable for 12 months from date of receipt.
Predicted Protein Size:	15 kDa
Gene Name:	cornichon family AMPA receptor auxiliary protein 1
Database Link:	<a href="#">NP_001099499</a> <a href="#">Entrez Gene 12793 Mouse</a> <a href="#">Entrez Gene 289994 Rat</a>
Background:	The function of Cnih remains unknown.
Note:	Immunogen Sequence Homology: Dog: 100%; Pig: 100%; Rat: 100%; Horse: 100%; Human: 100%; Mouse: 100%; Bovine: 100%; Zebrafish: 100%; Guinea pig: 100%; Rabbit: 79%



[View online »](#)

**Product images:**

WB Suggested Anti-Cnih Antibody Titration: 0.2-1 ug/ml; ELISA Titer: 1: 62500; Positive Control: Rat Lung