

## Product datasheet for **TA339025**

### **BAP31 (BCAP31) Rabbit Polyclonal Antibody**

#### **Product data:**

Product Type:	Primary Antibodies
Applications:	WB
Recommended Dilution:	WB
Reactivity:	Human, Mouse
Host:	Rabbit
Isotype:	IgG
Clonality:	Polyclonal
Immunogen:	The immunogen for anti-BCAP31 antibody: synthetic peptide directed towards the middle region of human BCAP31. Synthetic peptide located within the following region: STKQKLEKAENQVLAMRKQSEGLTKEYDRLLLEEHAKLQAAVDGPMDKKEE
Formulation:	Liquid. Purified antibody supplied in 1x PBS buffer with 0.09% (w/v) sodium azide and 2% sucrose. <i>Note that this product is shipped as lyophilized powder to China customers.</i>
Concentration:	lot specific
Purification:	Protein A purified
Conjugation:	Unconjugated
Storage:	Store at -20°C as received.
Stability:	Stable for 12 months from date of receipt.
Predicted Protein Size:	28 kDa
Gene Name:	B-cell receptor-associated protein 31
Database Link:	<a href="#">NP_005736</a> <a href="#">Entrez Gene 27061 Mouse</a> <a href="#">Entrez Gene 10134 Human</a> <a href="#">P51572</a>



[View online »](#)

**Background:**

This gene encodes a member of the B-cell receptor associated protein 31 superfamily. The encoded protein is a multi-pass transmembrane protein of the endoplasmic reticulum that is involved in the anterograde transport of membrane proteins from the endoplasmic reticulum to the Golgi and in caspase 8-mediated apoptosis. Microdeletions in this gene are associated with contiguous ABCD1/DXS1375E deletion syndrome (CADD5), a neonatal disorder. Alternative splicing of this gene results in multiple transcript variants. Two related pseudogenes have been identified on chromosome 16. [provided by RefSeq, Jan 2012]

**Synonyms:**

6C6-AG; BAP31; CDM; DDCH; DXS1357E

**Note:**

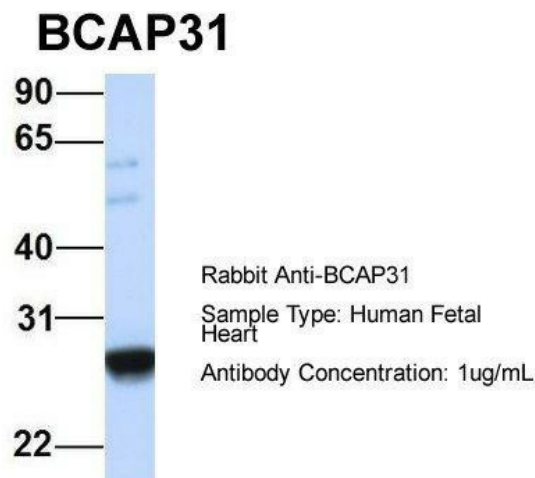
Immunogen Sequence Homology: Dog: 100%; Rat: 100%; Human: 100%; Mouse: 100%; Pig: 93%; Horse: 93%; Bovine: 93%; Guinea pig: 93%; Rabbit: 92%; Zebrafish: 92%

**Protein Families:**

Druggable Genome, Transmembrane

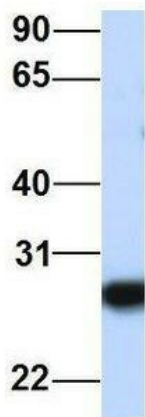
**Product images:**


WB Suggested Anti-BCAP31 Antibody Titration:  
0.2-1 ug/ml; ELISA Titer: 1: 1562500; Positive  
Control: 293T cell lysate



Host: Rabbit; Target Name: BCAP31; Sample  
Tissue: Human Fetal Heart; Antibody Dilution: 1.0  
ug/ml

## BCAP31



Rabbit Anti-BCAP31  
Sample Type: Human Fetal Lung  
Antibody Concentration: 1ug/mL

Host: Rabbit; Target Name: BCAP31; Sample  
Tissue: Human Fetal Lung; Antibody Dilution: 1.0  
ug/ml