

Product datasheet for **TA339022**

TSPAN5 Rabbit Polyclonal Antibody

Product data:

Product Type:	Primary Antibodies
Applications:	IHC, WB
Recommended Dilution:	WB, IHC
Reactivity:	Human
Host:	Rabbit
Isotype:	IgG
Clonality:	Polyclonal
Immunogen:	The immunogen for anti-TSPAN5 antibody: synthetic peptide directed towards the middle region of human TSPAN5. Synthetic peptide located within the following region: ASRERCGVPFSCCTKDPAEDVINTQCGYDARQKPEVDQQIVIYTKGCVPQ
Formulation:	Liquid. Purified antibody supplied in 1x PBS buffer with 0.09% (w/v) sodium azide and 2% sucrose.
Concentration:	lot specific
Purification:	Protein A purified
Conjugation:	Unconjugated
Storage:	Store at -20°C as received.
Stability:	Stable for 12 months from date of receipt.
Predicted Protein Size:	30 kDa
Gene Name:	tetraspanin 5
Database Link:	NP_005714 Entrez Gene 10098 Human P62079
Background:	The protein encoded by this gene is a member of the transmembrane 4 superfamily, also known as the tetraspanin family. Most of these members are cell-surface proteins that are characterized by the presence of four hydrophobic domains. The proteins mediate signal transduction events that play a role in the regulation of cell development, activation, growth and motility. [provided by RefSeq, Jul 2008]
Synonyms:	NET-4; NET4; TM4SF9; TSPAN-5

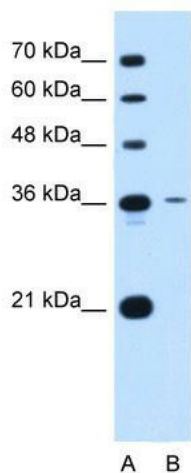


[View online »](#)

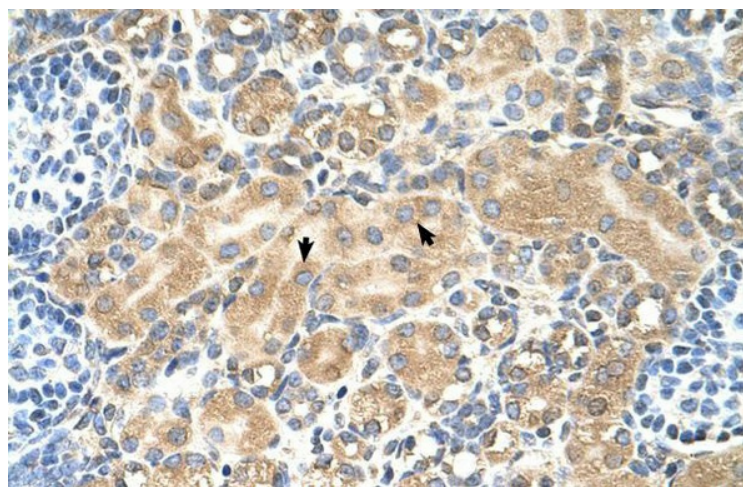
Note: Immunogen Sequence Homology: Dog: 100%; Pig: 100%; Rat: 100%; Horse: 100%; Human: 100%; Mouse: 100%; Bovine: 100%; Rabbit: 100%; Guinea pig: 100%

Protein Families: Transmembrane

Product images:



TSPAN5 antibody - middle region validated by WB using Jurkat cell lysate at 0.25 ug/ml.



Human kidney