

## Product datasheet for **TA339017**

### Reticulon 2 (RTN2) Rabbit Polyclonal Antibody

#### Product data:

Product Type:	Primary Antibodies
Applications:	IHC, WB
Recommended Dilution:	WB, IHC
Reactivity:	Human
Host:	Rabbit
Isotype:	IgG
Clonality:	Polyclonal
Immunogen:	The immunogen for anti-RTN2 antibody: synthetic peptide directed towards the N terminal of human RTN2. Synthetic peptide located within the following region: MGQVLPVFAHCKEAPSTASSTPDSTEGGNDDSDFRELHTAREFSEEDDEE
Formulation:	Liquid. Purified antibody supplied in 1x PBS buffer with 0.09% (w/v) sodium azide and 2% sucrose. <i>Note that this product is shipped as lyophilized powder to China customers.</i>
Concentration:	lot specific
Purification:	Protein A purified
Conjugation:	Unconjugated
Storage:	Store at -20°C as received.
Stability:	Stable for 12 months from date of receipt.
Predicted Protein Size:	51 kDa
Gene Name:	reticulon 2
Database Link:	<a href="#">NP_996783</a> <a href="#">Entrez Gene 6253 Human</a> <a href="#">O75298</a>
Background:	This gene belongs to the family of reticulon encoding genes. Reticulons are necessary for proper generation of tubular endoplasmic reticulum and likely play a role in intracellular vesicular transport. Alternatively spliced transcript variants encoding different isoforms have been identified. Mutations at this locus have been associated with autosomal dominant spastic paraplegia-12. [provided by RefSeq, Apr 2012]



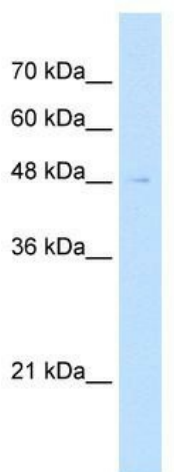
[View online »](#)

**Synonyms:** NSP2; NSPL1; NSPLI; SPG12

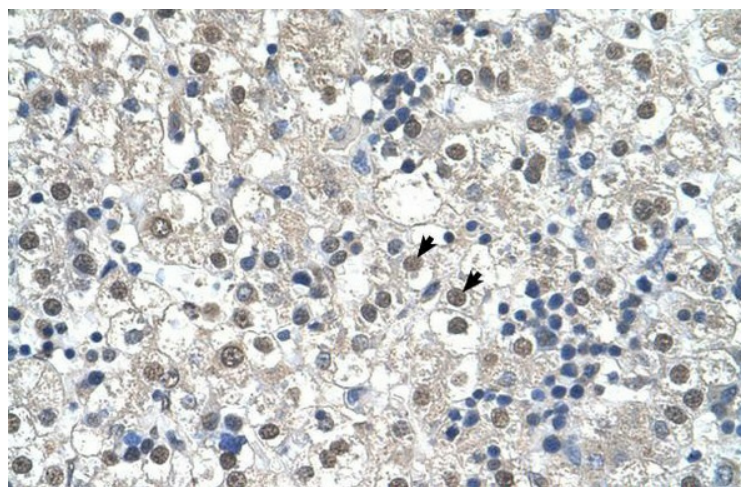
**Note:** Immunogen Sequence Homology: Dog: 100%; Pig: 100%; Rat: 100%; Horse: 100%; Human: 100%; Mouse: 100%; Bovine: 100%; Rabbit: 93%; Guinea pig: 93%

**Protein Families:** Transmembrane

**Product images:**



WB Suggested Antibody Titration: 2.5 ug/ml;  
Positive Control: Jurkat



Human Liver