

Product datasheet for **TA339012**

LMAN1 Rabbit Polyclonal Antibody

Product data:

Product Type:	Primary Antibodies
Applications:	WB
Recommended Dilution:	WB
Reactivity:	Human
Host:	Rabbit
Isotype:	IgG
Clonality:	Polyclonal
Immunogen:	The immunogen for anti-LMAN1 antibody: synthetic peptide directed towards the N terminal of human LMAN1. Synthetic peptide located within the following region: DPAVALPHRRFEYKYSFKGPHLVQSDGTVPFWAHAGNAIPSSDQIRVAPS
Formulation:	Liquid. Purified antibody supplied in 1x PBS buffer with 0.09% (w/v) sodium azide and 2% sucrose. <i>Note that this product is shipped as lyophilized powder to China customers.</i>
Concentration:	lot specific
Purification:	Protein A purified
Conjugation:	Unconjugated
Storage:	Store at -20°C as received.
Stability:	Stable for 12 months from date of receipt.
Predicted Protein Size:	54 kDa
Gene Name:	lectin, mannose binding 1
Database Link:	NP_005561 Entrez Gene 3998 Human P49257



[View online »](#)

Background:

The protein encoded by this gene is a type I integral membrane protein localized in the intermediate region between the endoplasmic reticulum and the Golgi, presumably recycling between the two compartments. The protein is a mannose-specific lectin and is a member of a novel family of plant lectin homologs in the secretory pathway of animal cells. Mutations in the gene are associated with a coagulation defect. Using positional cloning, the gene was identified as the disease gene leading to combined factor V-factor VIII deficiency, a rare, autosomal recessive disorder in which both coagulation factors V and VIII are diminished. [provided by RefSeq, Jul 2008]

Synonyms:

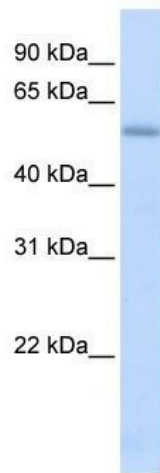
ERGIC-53; ERGIC53; F5F8D; FMFD1; gp58; MCFD1; MR60

Note:

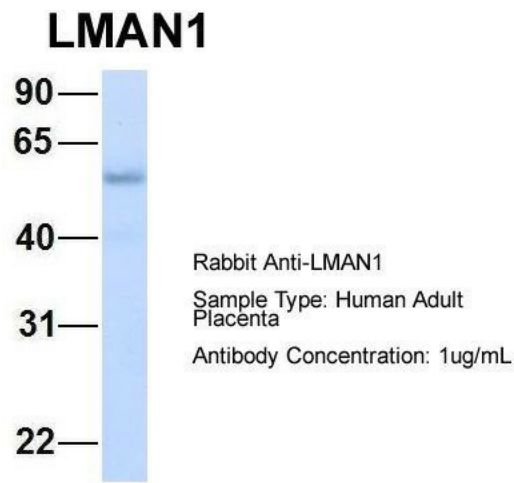
Immunogen Sequence Homology: Dog: 100%; Pig: 100%; Rat: 100%; Horse: 100%; Human: 100%; Mouse: 100%; Bovine: 100%; Rabbit: 93%; Zebrafish: 93%; Guinea pig: 93%

Protein Families:

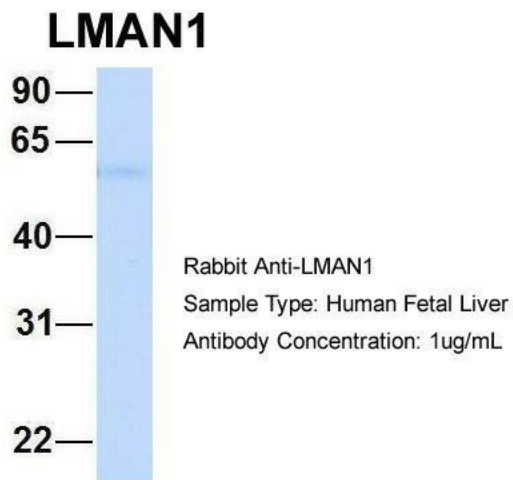
Druggable Genome, Transmembrane

Product images:

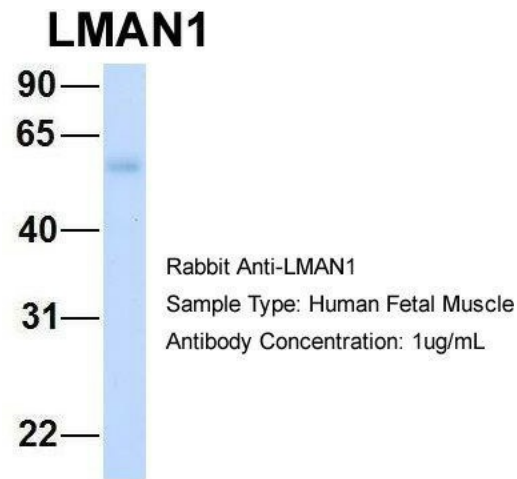
WB Suggested Anti-LMAN1 Antibody Titration:
0.2-1 ug/ml; ELISA Titer: 1: 62500; Positive
Control: Human heart



2Hum. Adult Placenta; Host: Rabbit; Target Name: CHAD; Sample Tissue: Human Adult Placenta; Antibody Dilution: 1.0 ug/ml



3Hum. Fetal Liver; Host: Rabbit; Target Name: FAM46C; Sample Tissue: Human Fetal Liver; Antibody Dilution: 1.0 ug/ml



4Hum. Fetal Muscle; Host: Rabbit; Target Name: NOP56; Sample Tissue: Human Fetal Muscle; Antibody Dilution: 1.0 ug/ml