

Product datasheet for **TA339000**

DGCR2 Rabbit Polyclonal Antibody

Product data:

Product Type:	Primary Antibodies
Applications:	WB
Recommended Dilution:	WB
Reactivity:	Human, Rat
Host:	Rabbit
Isotype:	IgG
Clonality:	Polyclonal
Immunogen:	The immunogen for anti-DGCR2 antibody: synthetic peptide directed towards the middle region of human DGCR2. Synthetic peptide located within the following region: AESCYEKSSFLCKRSQTCVDIKDNVDEGFYFTPKGDDPCLSCTCHGGEP
Formulation:	Liquid. Purified antibody supplied in 1x PBS buffer with 0.09% (w/v) sodium azide and 2% sucrose. <i>Note that this product is shipped as lyophilized powder to China customers.</i>
Concentration:	lot specific
Purification:	Protein A purified
Conjugation:	Unconjugated
Storage:	Store at -20°C as received.
Stability:	Stable for 12 months from date of receipt.
Predicted Protein Size:	61 kDa
Gene Name:	DiGeorge syndrome critical region gene 2
Database Link:	NP_005128 Entrez Gene 360742 Rat Entrez Gene 9993 Human P98153



[View online »](#)

Background:

Deletions of the 22q11.2 have been associated with a wide range of developmental defects (notably DiGeorge syndrome, velocardiofacial syndrome, conotruncal anomaly face syndrome and isolated conotruncal cardiac defects) classified under the acronym CATCH 22. The DGCR2 gene encodes a novel putative adhesion receptor protein, which could play a role in neural crest cells migration, a process which has been proposed to be altered in DiGeorge syndrome. Alternative splicing results in multiple transcript variants. [provided by RefSeq, May 2010]

Synonyms:

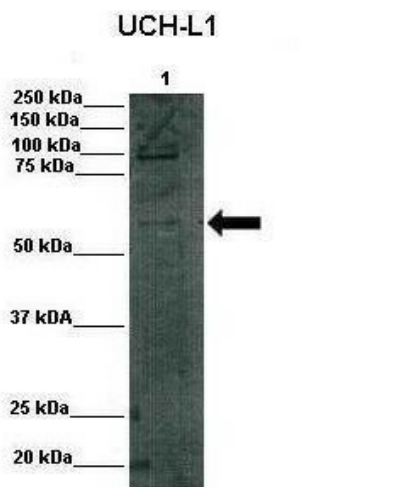
DGS-C; IDD; LAN; SEZ-12

Note:

Immunogen Sequence Homology: Dog: 100%; Pig: 100%; Rat: 100%; Horse: 100%; Human: 100%; Mouse: 100%; Bovine: 100%; Rabbit: 100%; Guinea pig: 100%; Zebrafish: 86%

Protein Families:

Druggable Genome, Transmembrane

Product images:


Lanes: Lane 1: 75, 000 rat INS1 cells; Primary Antibody Dilution: 1: 1000; Secondary Antibody: Anti rabbit-HRP; Secondary Antibody Dilution: 1: 1000; Gene Name: DGCR2; Submitted by: Benedich Bracleva, VUB, Universitair Ziekenhuis Brussel;



WB Suggested Anti-DGCR2 Antibody Titration: 0.2-1 ug/ml; ELISA Titer: 1: 62500; Positive Control: HeLa cell lysate