

Product datasheet for **TA338997**

Exog Rabbit Polyclonal Antibody

Product data:

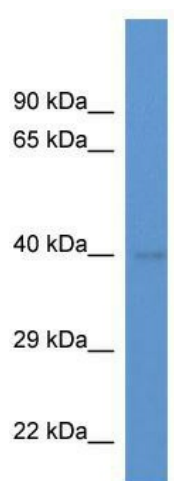
Product Type:	Primary Antibodies
Applications:	WB
Recommended Dilution:	WB
Reactivity:	Mouse
Host:	Rabbit
Isotype:	IgG
Clonality:	Polyclonal
Immunogen:	The immunogen for anti-Endogl1 antibody: synthetic peptide corresponding to a region of Mouse. Synthetic peptide located within the following region: TETRRYTNHALSYDQAKRVPRWVLEHISKDKIIGDADRKHCKFKPDPSVP
Formulation:	Liquid. Purified antibody supplied in 1x PBS buffer with 0.09% (w/v) sodium azide and 2% sucrose. <i>Note that this product is shipped as lyophilized powder to China customers.</i>
Concentration:	lot specific
Purification:	Protein A purified
Conjugation:	Unconjugated
Storage:	Store at -20°C as received.
Stability:	Stable for 12 months from date of receipt.
Predicted Protein Size:	41 kDa
Gene Name:	endo/exonuclease (5'-3'), endonuclease G-like
Database Link:	NP_766044 Entrez Gene 208194 Mouse Q8C163
Background:	Endo/exonuclease with nicking activity towards supercoiled DNA, a preference for single-stranded DNA and 5'-3' exonuclease activity.
Synonyms:	ENDOGL1; ENDOGL2; ENGL; ENGL-a; ENGL-b; ENGLA; ENGLB; MGC125944; MGC125945



[View online »](#)

Note: Immunogen Sequence Homology: Rat: 100%; Human: 100%; Mouse: 100%; Rabbit: 100%;
Dog: 93%; Pig: 93%; Horse: 93%; Bovine: 93%

Product images:



WB Suggested Anti-Endog11 Antibody; Titration:
1.0 ug/ml; Positive Control: Mouse Kidney