

## Product datasheet for **TA338995**

### BLK Rabbit Polyclonal Antibody

#### Product data:

|                         |  |
|-------------------------|--|
| Product Type:           | Primary Antibodies   |
| Applications:           | WB   |
| Recommended Dilution:   | WB   |
| Reactivity:             | Human  |
| Host:                   | Rabbit   |
| Isotype:                | IgG  |
| Clonality:              | Polyclonal   |
| Immunogen:              | The immunogen for anti-BLK antibody: synthetic peptide directed towards the middle region of human BLK. Synthetic peptide located within the following region:<br>AVVTKEPIYIVTEYMARGCLLDFLKTDEGSRLSLPRLIDMSAQIAEGMAY   |
| Formulation:            | Liquid. Purified antibody supplied in 1x PBS buffer with 0.09% (w/v) sodium azide and 2% sucrose.<br><i>Note that this product is shipped as lyophilized powder to China customers.</i>  |
| Concentration:          | lot specific   |
| Purification:           | Protein A purified   |
| Conjugation:            | Unconjugated   |
| Storage:                | Store at -20°C as received.  |
| Stability:              | Stable for 12 months from date of receipt.   |
| Predicted Protein Size: | 58 kDa   |
| Gene Name:              | BLK proto-oncogene, Src family tyrosine kinase   |
| Database Link:          | <a href="#">NP_001706</a><br><a href="#">Entrez Gene 640 Human</a><br><a href="#">P51451</a>   |
| Background:             | This gene encodes a nonreceptor tyrosine-kinase of the src family of proto-oncogenes that are typically involved in cell proliferation and differentiation. The protein has a role in B-cell receptor signaling and B-cell development. The protein also stimulates insulin synthesis and secretion in response to glucose and enhances the expression of several pancreatic beta-cell transcription factors. [provided by RefSeq, Aug 2010] |



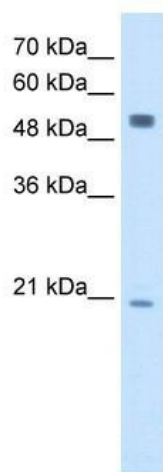
[View online »](#)

**Synonyms:** MODY11

**Note:** Immunogen Sequence Homology: Pig: 100%; Rat: 100%; Human: 100%; Mouse: 100%; Dog: 93%; Horse: 93%; Bovine: 93%; Rabbit: 93%; Guinea pig: 93%

**Protein Families:** Druggable Genome, Protein Kinase

**Product images:**



WB Suggested Anti-BLK Antibody Titration: 2.5 ug/ml; Positive Control: HepG2 cell lysate