

Product datasheet for **TA338991**

EIF2G (EIF2S3) Rabbit Polyclonal Antibody

Product data:

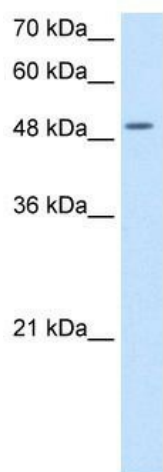
Product Type:	Primary Antibodies
Applications:	WB
Recommended Dilution:	WB
Reactivity:	Human
Host:	Rabbit
Isotype:	IgG
Clonality:	Polyclonal
Immunogen:	The immunogen for anti-EIF2S3 antibody: synthetic peptide directed towards the N terminal of human EIF2S3. Synthetic peptide located within the following region: LDDPSCPRPECYRSCGSSTPDEFPTDIPGTKGNFKLVRHVSFVDCPGHDI
Formulation:	Liquid. Purified antibody supplied in 1x PBS buffer with 0.09% (w/v) sodium azide and 2% sucrose. <i>Note that this product is shipped as lyophilized powder to China customers.</i>
Concentration:	lot specific
Purification:	Protein A purified
Conjugation:	Unconjugated
Storage:	Store at -20°C as received.
Stability:	Stable for 12 months from date of receipt.
Predicted Protein Size:	51 kDa
Gene Name:	eukaryotic translation initiation factor 2 subunit gamma
Database Link:	NP_001406 Entrez Gene 1968 Human P41091
Background:	The protein encoded by this gene is the largest subunit of a heterotrimeric GTP-binding protein involved in the recruitment of methionyl-tRNA(i) to the 40 S ribosomal subunit. [provided by RefSeq, Jan 2010]
Synonyms:	eIF-2gA; EIF2; EIF2G; EIF2gamma



[View online »](#)

Note: Immunogen Sequence Homology: Dog: 100%; Pig: 100%; Rat: 100%; Horse: 100%; Human: 100%; Mouse: 100%; Bovine: 100%; Rabbit: 100%; Zebrafish: 100%; Guinea pig: 100%

Product images:



WB Suggested Anti-EIF2S3 Antibody Titration: 5.0 ug/ml; Positive Control: Jurkat cell lysate. EIF2S3 is supported by BioGPS gene expression data to be expressed in Jurkat