

Product datasheet for **TA338990**

eIF1A (EIF1AX) Rabbit Polyclonal Antibody

Product data:

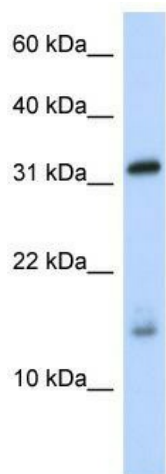
Product Type:	Primary Antibodies
Applications:	WB
Recommended Dilution:	WB
Reactivity:	Human
Host:	Rabbit
Isotype:	IgG
Clonality:	Polyclonal
Immunogen:	The immunogen for anti-EIF1AX antibody: synthetic peptide directed towards the middle region of human EIF1AX. Synthetic peptide located within the following region: KYNADEARSLKAYGELPEHAKINETDTFGPGDDDEIQFDDIGDDDEDIDD
Formulation:	Liquid. Purified antibody supplied in 1x PBS buffer with 0.09% (w/v) sodium azide and 2% sucrose. <i>Note that this product is shipped as lyophilized powder to China customers.</i>
Concentration:	lot specific
Purification:	Protein A purified
Conjugation:	Unconjugated
Storage:	Store at -20°C as received.
Stability:	Stable for 12 months from date of receipt.
Predicted Protein Size:	16 kDa
Gene Name:	eukaryotic translation initiation factor 1A, X-linked
Database Link:	NP_001403 Entrez Gene 1964 Human P47813
Background:	This gene encodes an essential eukaryotic translation initiation factor. The protein is required for the binding of the 43S complex (a 40S subunit, eIF2/GTP/Met-tRNA ⁱ and eIF3) to the 5' end of capped RNA. [provided by RefSeq, Jul 2008]
Synonyms:	eIF-1A; eIF-4C; EIF1A; EIF1AP1; EIF4C



[View online »](#)

Note: Immunogen Sequence Homology: Dog: 100%; Pig: 100%; Rat: 100%; Horse: 100%; Human: 100%; Mouse: 100%; Sheep: 100%; Bovine: 100%; Rabbit: 100%; Zebrafish: 100%; Guinea pig: 100%; Yeast: 92%

Product images:



WB Suggested Anti-EIF1AX Antibody Titration: 0.2-1 ug/ml; ELISA Titer: 1: 2500; Positive Control: Human brain