

Product datasheet for TA338987

SKAP55 (SKAP1) Rabbit Polyclonal Antibody

Product data:

Product Type:	Primary Antibodies
Applications:	WB
Recommended Dilution:	WB
Reactivity:	Human
Host:	Rabbit
Isotype:	IgG
Clonality:	Polyclonal
Immunogen:	The immunogen for anti-SKAP1 antibody: synthetic peptide directed towards the N terminal of human SKAP1. Synthetic peptide located within the following region: RDHILRGFQIQIKARYYWDFQPQGGDIGQDSSDDNHSGLGLSLTSDAPFL
Formulation:	Liquid. Purified antibody supplied in 1x PBS buffer with 0.09% (w/v) sodium azide and 2% sucrose.
Concentration:	lot specific
Purification:	Protein A purified
Conjugation:	Unconjugated
Storage:	Store at -20°C as received.
Stability:	Stable for 12 months from date of receipt.
Predicted Protein Size:	41 kDa
Gene Name:	src kinase associated phosphoprotein 1
Database Link:	NP_003717 Entrez Gene 8631 Human Q86WV1
Background:	This gene encodes a T cell adaptor protein, a class of intracellular molecules with modular domains capable of recruiting additional proteins but that exhibit no intrinsic enzymatic activity. The encoded protein contains a unique N-terminal region followed by a PH domain and C-terminal SH3 domain. Along with the adhesion and degranulation-promoting adaptor protein, the encoded protein plays a critical role in inside-out signaling by coupling T-cell antigen receptor stimulation to the activation of integrins. [provided by RefSeq, Jul 2008]

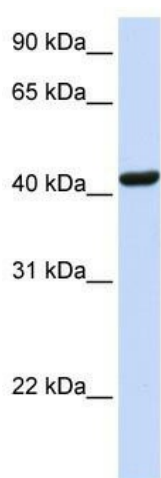


[View online »](#)

Synonyms: HEL-S-81p; SCAP1; SKAP55

Note: Immunogen Sequence Homology: Human: 100%; Mouse: 86%; Rabbit: 86%; Rat: 79%

Product images:



WB Suggested Anti-SKAP1 Antibody Titration: 0.2-1 ug/ml; ELISA Titer: 1: 312500; Positive Control: Human brain