

Product datasheet for **TA338985**

SMC2 Rabbit Polyclonal Antibody

Product data:

Product Type:	Primary Antibodies
Applications:	WB
Recommended Dilution:	WB
Reactivity:	Human
Host:	Rabbit
Isotype:	IgG
Clonality:	Polyclonal
Immunogen:	The immunogen for anti-SMC2 antibody: synthetic peptide directed towards the N terminal of human SMC2. Synthetic peptide located within the following region: ISNLSQVRASNLQDLVYKNGQAGITKASVSITFDNSDKKQSPLGFVHDE
Formulation:	Liquid. Purified antibody supplied in 1x PBS buffer with 0.09% (w/v) sodium azide and 2% sucrose. <i>Note that this product is shipped as lyophilized powder to China customers.</i>
Concentration:	lot specific
Purification:	Protein A purified
Conjugation:	Unconjugated
Storage:	Store at -20°C as received.
Stability:	Stable for 12 months from date of receipt.
Predicted Protein Size:	32 kDa
Gene Name:	structural maintenance of chromosomes 2
Database Link:	NP_001036015 Entrez Gene 10592 Human O95347



[View online »](#)

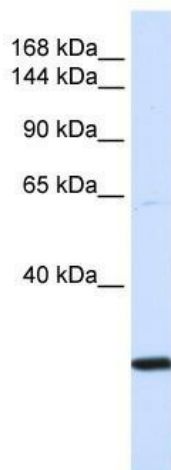
Background: Members of the structural maintenance of chromosomes, or SMC, family (e.g., SMC1A; MIM 300040) are critical for mitotic chromosome condensation in frogs and for DNA repair in mammals. [supplied by OMIM, Nov 2010]. Transcript Variant: This variant (1) represents the longest transcript. All variants encode the same protein. Publication Note: This RefSeq record includes a subset of the publications that are available for this gene. Please see the Gene record to access additional publications. ##Evidence-Data-START## Transcript exon combination :: AK001485.1 [ECO:0000332] RNAseq introns :: single sample supports all introns ERS025082, ERS025084 [ECO:0000348] ##Evidence-Data-END## COMPLETENESS: complete on the 3' end.

Synonyms: CAP-E; CAPE; SMC-2; SMC2L1

Note: Immunogen Sequence Homology: Dog: 100%; Pig: 100%; Rat: 100%; Horse: 100%; Human: 100%; Mouse: 100%; Bovine: 100%; Rabbit: 100%; Guinea pig: 100%; Zebrafish: 93%; Yeast: 86%

Protein Families: Druggable Genome

Product images:



WB Suggested Anti-SMC2 Antibody Titration: 0.2-1 ug/ml; ELISA Titer: 1: 312500; Positive Control: 293T cell lysate. SMC2 is strongly supported by BioGPS gene expression data to be expressed in Human HEK293T cells