

## Product datasheet for **TA338984**

### CENPA Rabbit Polyclonal Antibody

#### Product data:

Product Type:	Primary Antibodies
Applications:	WB
Recommended Dilution:	WB
Reactivity:	Human
Host:	Rabbit
Isotype:	IgG
Clonality:	Polyclonal
Immunogen:	The immunogen for anti-CENPA antibody: synthetic peptide directed towards the middle region of human CENPA. Synthetic peptide located within the following region: ALQEAAEAFVHLFEDAYLLTLHAGRVTLFPKDVQLARRIRGLEEGLG
Formulation:	Liquid. Purified antibody supplied in 1x PBS buffer with 0.09% (w/v) sodium azide and 2% sucrose. <i>Note that this product is shipped as lyophilized powder to China customers.</i>
Concentration:	lot specific
Purification:	Protein A purified
Conjugation:	Unconjugated
Storage:	Store at -20°C as received.
Stability:	Stable for 12 months from date of receipt.
Predicted Protein Size:	16 kDa
Gene Name:	centromere protein A
Database Link:	<a href="#">NP_001800</a> <a href="#">Entrez Gene 1058 Human P49450</a>



[View online »](#)

**Background:**

Centromeres are the differentiated chromosomal domains that specify the mitotic behavior of chromosomes. CENPA encodes a centromere protein which contains a histone H3 related histone fold domain that is required for targeting to the centromere. CENPA is proposed to be a component of a modified nucleosome or nucleosome-like structure in which it replaces 1 or both copies of conventional histone H3 in the (H3-H4)<sub>2</sub> tetrameric core of the nucleosome particle. Alternative splicing results in multiple transcript variants encoding distinct isoforms. [provided by RefSeq, Jul 2008]

**Synonyms:**

CenH3; CENP-A

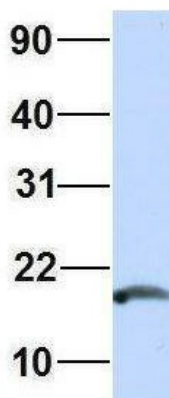
**Note:**

Immunogen Sequence Homology: Dog: 100%; Pig: 100%; Rat: 100%; Horse: 100%; Human: 100%; Bovine: 100%; Rabbit: 100%; Guinea pig: 100%; Mouse: 86%; Zebrafish: 85%; Goat: 77%

**Product images:**


WB Suggested Anti-CENPA Antibody Titration: 0.2-1 ug/ml; ELISA Titer: 1: 62500; Positive Control: HeLa cell lysate. CENPA is strongly supported by BioGPS gene expression data to be expressed in HeLa

## CENPA



Rabbit Anti-CENPA  
 Sample Type: Human 721\_B  
 Antibody Concentration: 1ug/mL

Host: Rabbit; Target Name: CENPA; Sample Tissue: 721\_B; Antibody Dilution: 1.0 ug/ml. CENPA is strongly supported by BioGPS gene expression data to be expressed in Human 721\_B cells