

Product datasheet for **TA338980**

L Kynurenine Hydrolase (KYNU) Rabbit Polyclonal Antibody

Product data:

Product Type:	Primary Antibodies
Applications:	IHC, WB
Recommended Dilution:	WB, IHC
Reactivity:	Human
Host:	Rabbit
Isotype:	IgG
Clonality:	Polyclonal
Immunogen:	The immunogen for anti-KYNU antibody: synthetic peptide directed towards the C terminal of human KYNU. Synthetic peptide located within the following region: LAHAVGNVELYLHDWGVDFACWCSYKYLNAGAGGIAGAFIHEKHAHTIKP
Formulation:	Liquid. Purified antibody supplied in 1x PBS buffer with 0.09% (w/v) sodium azide and 2% sucrose. <i>Note that this product is shipped as lyophilized powder to China customers.</i>
Concentration:	lot specific
Purification:	Protein A purified
Conjugation:	Unconjugated
Storage:	Store at -20°C as received.
Stability:	Stable for 12 months from date of receipt.
Predicted Protein Size:	52 kDa
Gene Name:	kynureninase
Database Link:	NP_003928 Entrez Gene 8942 Human Q16719
Background:	Kynureninase is a pyridoxal-5'-phosphate (pyridoxal-P) dependent enzyme that catalyzes the cleavage of L-kynurenine and L-3-hydroxykynurenine into anthranilic and 3-hydroxyanthranilic acids, respectively. Kynureninase is involved in the biosynthesis of NAD cofactors from tryptophan through the kynurenine pathway. Alternative splicing results in multiple transcript variants. [provided by RefSeq, Nov 2010]



[View online »](#)

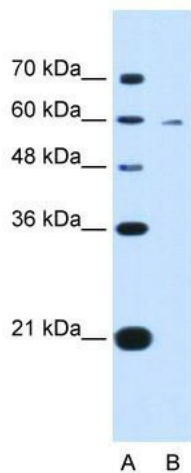
Synonyms: KYNUU

Note: Immunogen Sequence Homology: Human: 100%; Pig: 93%; Horse: 93%; Yeast: 93%; Guinea pig: 93%; Dog: 86%; Rat: 86%; Mouse: 86%; Bovine: 86%; Rabbit: 86%

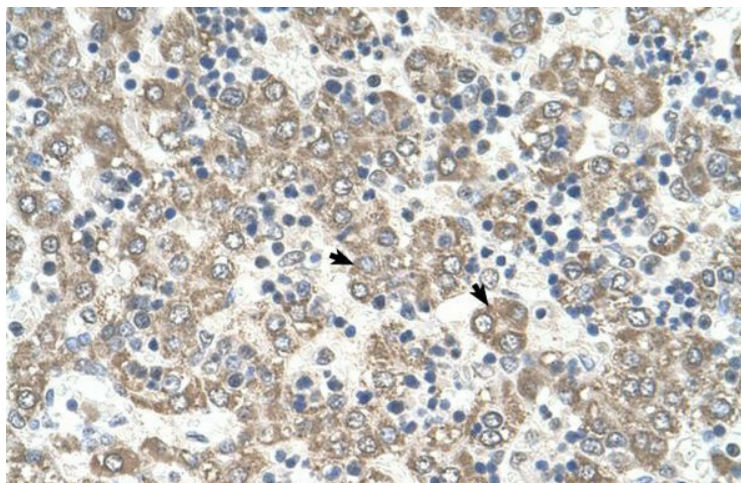
Protein Families: Protease

Protein Pathways: Metabolic pathways, Tryptophan metabolism

Product images:



WB Suggested Anti-KYNU Antibody Titration: 0.2-1 ug/ml; ELISA Titer: 1: 312500; Positive Control: HepG2 cell lysate. KYNU is supported by BioGPS gene expression data to be expressed in HepG2



Human Liver