

Product datasheet for **TA338978**

IFIT3 Rabbit Polyclonal Antibody

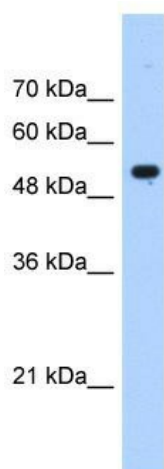
Product data:

Product Type:	Primary Antibodies
Applications:	IHC, WB
Recommended Dilution:	WB, IHC
Reactivity:	Human
Host:	Rabbit
Isotype:	IgG
Clonality:	Polyclonal
Immunogen:	The immunogen for anti-IFIT3 antibody: synthetic peptide directed towards the N terminal of human IFIT3. Synthetic peptide located within the following region: ATMYNLLAYIKHLDGNNEAALECLRQAEELIQEHADQAEIRSLVTWGN Y
Formulation:	Liquid. Purified antibody supplied in 1x PBS buffer with 0.09% (w/v) sodium azide and 2% sucrose. <i>Note that this product is shipped as lyophilized powder to China customers.</i>
Concentration:	lot specific
Purification:	Protein A purified
Conjugation:	Unconjugated
Storage:	Store at -20°C as received.
Stability:	Stable for 12 months from date of receipt.
Predicted Protein Size:	56 kDa
Gene Name:	interferon induced protein with tetratricopeptide repeats 3
Database Link:	NP_001026853 Entrez Gene 3437 Human O14879
Background:	The function remains unknown.
Synonyms:	CIG-49; GARG-49; IFI60; IFIT4; IRG2; ISG60; P60; RIG-G
Note:	Immunogen Sequence Homology: Human: 100%; Rat: 93%; Rabbit: 93%; Pig: 86%; Bovine: 86%; Mouse: 79%

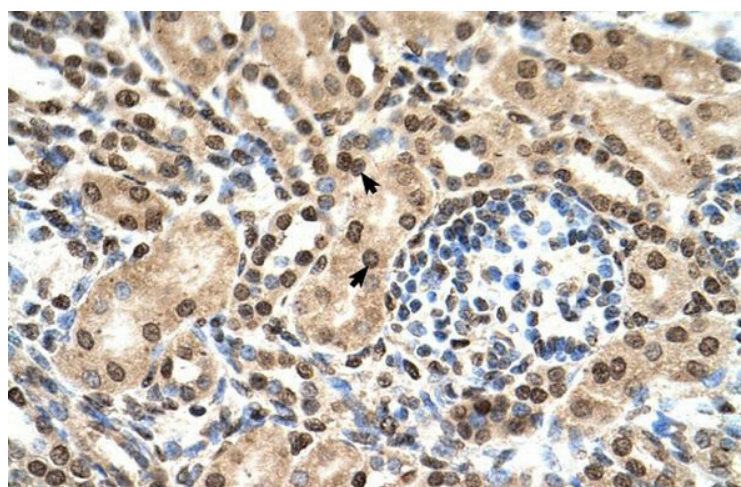


[View online »](#)

Product images:



WB Suggested Anti-IFIT3 Antibody Titration: 0.25 ug/ml; Positive Control: HepG2 cell lysate



Human kidney