

Product datasheet for **TA338976**

RRM2 Rabbit Polyclonal Antibody

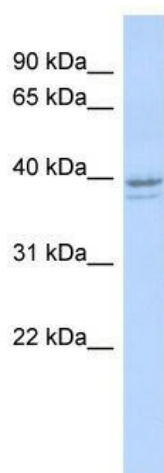
Product data:

Product Type:	Primary Antibodies
Applications:	WB
Recommended Dilution:	WB
Reactivity:	Human
Host:	Rabbit
Isotype:	IgG
Clonality:	Polyclonal
Immunogen:	The immunogen for anti-RRM2 antibody: synthetic peptide directed towards the N terminal of human RRM2. Synthetic peptide located within the following region: PALSGTRVLASKTARRIFQEPTPEPKTKAAAPGVEDEPLLRENPRRFVIFP
Formulation:	Liquid. Purified antibody supplied in 1x PBS buffer with 0.09% (w/v) sodium azide and 2% sucrose. <i>Note that this product is shipped as lyophilized powder to China customers.</i>
Concentration:	lot specific
Purification:	Protein A purified
Conjugation:	Unconjugated
Storage:	Store at -20°C as received.
Stability:	Stable for 12 months from date of receipt.
Predicted Protein Size:	45 kDa
Gene Name:	ribonucleotide reductase regulatory subunit M2
Database Link:	NP_001025 Entrez Gene 6241 Human P31350



[View online »](#)

Background:	This gene encodes one of two non-identical subunits for ribonucleotide reductase. This reductase catalyzes the formation of deoxyribonucleotides from ribonucleotides. Synthesis of the encoded protein (M2) is regulated in a cell-cycle dependent fashion. Transcription from this gene can initiate from alternative promoters, which results in two isoforms that differ in the lengths of their N-termini. Related pseudogenes have been identified on chromosomes 1 and X. [provided by RefSeq, Sep 2009]
Synonyms:	R2; RR2; RR2M
Note:	Immunogen Sequence Homology: Pig: 100%; Human: 100%; Guinea pig: 100%; Dog: 93%; Rat: 93%; Bovine: 93%; Horse: 86%
Protein Families:	Druggable Genome
Protein Pathways:	Glutathione metabolism, Metabolic pathways, p53 signaling pathway, Purine metabolism, Pyrimidine metabolism

Product images:

WB Suggested Anti-RRM2 Antibody Titration: 0.2-1 ug/ml; ELISA Titer: 1: 1562500; Positive Control: Human Muscle