

Product datasheet for **TA338973**

Arp2 (ACTR2) Rabbit Polyclonal Antibody

Product data:

Product Type:	Primary Antibodies
Applications:	IHC, WB
Recommended Dilution:	WB, IHC
Reactivity:	Human
Host:	Rabbit
Isotype:	IgG
Clonality:	Polyclonal
Immunogen:	The immunogen for anti-ACTR2 antibody: synthetic peptide directed towards the N terminal of human ACTR2. Synthetic peptide located within the following region: NGIVRNWDDMKHLWDYTFGPEKLNIDTRNCKILLTEPPMNPTKNREKIVE
Formulation:	Liquid. Purified antibody supplied in 1x PBS buffer with 0.09% (w/v) sodium azide and 2% sucrose. <i>Note that this product is shipped as lyophilized powder to China customers.</i>
Concentration:	lot specific
Purification:	Protein A purified
Conjugation:	Unconjugated
Storage:	Store at -20°C as received.
Stability:	Stable for 12 months from date of receipt.
Predicted Protein Size:	45 kDa
Gene Name:	ARP2 actin-related protein 2 homolog (yeast)
Database Link:	NP_001005386 Entrez Gene 10097 Human P61160
Background:	The specific function of this gene has not yet been determined; however, the protein it encodes is known to be a major constituent of the ARP2/3 complex. This complex is located at the cell surface and is essential to cell shape and motility through lamellipodial actin assembly and protrusion. Two transcript variants encoding different isoforms have been found for this gene. [provided by RefSeq, Jul 2008]



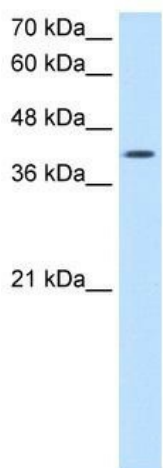
[View online »](#)

Synonyms: ARP2

Note: Immunogen Sequence Homology: Dog: 100%; Pig: 100%; Rat: 100%; Horse: 100%; Human: 100%; Mouse: 100%; Bovine: 100%; Rabbit: 100%; Guinea pig: 100%; Zebrafish: 93%

Protein Families: Druggable Genome

Product images:



ACTR2 antibody - N-terminal region validated by WB using Jurkat cell lysate at 2.5 ug/ml. ACTR2 is strongly supported by BioGPS gene expression data to be expressed in Human Jurkat cells



Human Muscle