

Product datasheet for **TA338969**

Prim1 Rabbit Polyclonal Antibody

Product data:

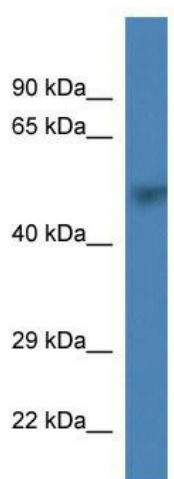
Product Type:	Primary Antibodies
Applications:	WB
Recommended Dilution:	WB
Reactivity:	Mouse
Host:	Rabbit
Isotype:	IgG
Clonality:	Polyclonal
Immunogen:	The immunogen for anti-Prim1 antibody: synthetic peptide corresponding to a region of Mouse. Synthetic peptide located within the following region: EKEKEENEADSKHRVRGYKKTSLAPYVKVFEQFLENLDKSRKGELLKSD
Formulation:	Liquid. Purified antibody supplied in 1x PBS buffer with 0.09% (w/v) sodium azide and 2% sucrose. <i>Note that this product is shipped as lyophilized powder to China customers.</i>
Concentration:	lot specific
Purification:	Protein A purified
Conjugation:	Unconjugated
Storage:	Store at -20°C as received.
Stability:	Stable for 12 months from date of receipt.
Predicted Protein Size:	49 kDa
Gene Name:	DNA primase, p49 subunit
Database Link:	NP_032947 Entrez Gene 19075 Mouse P20664
Background:	DNA primase is the polymerase that synthesizes small RNA primers for the Okazaki fragments made during discontinuous DNA replication.
Synonyms:	MGC12308; p49



[View online »](#)

Note: Immunogen Sequence Homology: Pig: 100%; Horse: 100%; Human: 100%; Mouse: 100%; Bovine: 100%; Rabbit: 100%; Guinea pig: 100%; Rat: 93%

Product images:



WB Suggested Anti-Prim1 Antibody; Titration: 1.0 ug/ml; Positive Control: Mouse Kidney