

Product datasheet for TA338967

GUCY1B1 Rabbit Polyclonal Antibody

Product data:

Product Type:	Primary Antibodies
Applications:	WB
Recommended Dilution:	WB
Reactivity:	Human
Host:	Rabbit
Isotype:	IgG
Clonality:	Polyclonal
Immunogen:	The immunogen for anti-GUCY1B3 antibody: synthetic peptide directed towards the N terminal of human GUCY1B3. Synthetic peptide located within the following region: LIEEKESKEEDFYEDLDRFEENGTSRISPYTFCKAFPFHIIIFDRDLVV
Formulation:	Liquid. Purified antibody supplied in 1x PBS buffer with 0.09% (w/v) sodium azide and 2% sucrose. <i>Note that this product is shipped as lyophilized powder to China customers.</i>
Concentration:	lot specific
Purification:	Protein A purified
Conjugation:	Unconjugated
Storage:	Store at -20°C as received.
Stability:	Stable for 12 months from date of receipt.
Predicted Protein Size:	70 kDa
Gene Name:	guanylate cyclase 1, soluble, beta 3
Database Link:	NP_000848 Entrez Gene 2983 Human Q02153
Background:	This gene encodes the beta subunit of the soluble guanylate cyclase (sGC), which catalyzes the conversion of GTP (guanosine triphosphate) to cGMP (cyclic guanosine monophosphate). The encoded protein contains an HNOX domain, which serves as a receptor for ligands such as nitric oxide, oxygen and nitrovasodilator drugs. Alternative splicing results in multiple transcript variants. [provided by RefSeq, May 2014]



[View online »](#)

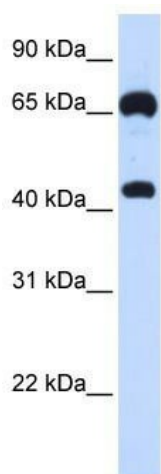
Synonyms: GC-S-beta-1; GC-SB3; GUC1B3; GUCB3; GUCSB3; GUCY1B1

Note: Immunogen Sequence Homology: Dog: 100%; Pig: 100%; Rat: 100%; Horse: 100%; Human: 100%; Mouse: 100%; Bovine: 100%; Rabbit: 100%; Guinea pig: 100%; Zebrafish: 92%

Protein Families: Druggable Genome

Protein Pathways: Gap junction, Long-term depression, Purine metabolism, Vascular smooth muscle contraction

Product images:



WB Suggested Anti-GUCY1B3 Antibody Titration: 0.2-1 ug/ml; ELISA Titer: 1: 12500; Positive Control: 293T cell lysate. GUCY1B3 is supported by BioGPS gene expression data to be expressed in HEK293T