

Product datasheet for **TA338963**

GM2A Rabbit Polyclonal Antibody

Product data:

Product Type:	Primary Antibodies
Applications:	WB
Recommended Dilution:	WB
Reactivity:	Human
Host:	Rabbit
Isotype:	IgG
Clonality:	Polyclonal
Immunogen:	The immunogen for anti-GM2A antibody: synthetic peptide directed towards the N terminal of human GM2A. Synthetic peptide located within the following region: SWDNCDEGKDPVIRSLTLEPDPIIVPGNVTLVSVMGSTSVP LSSPLKVDL
Formulation:	Liquid. Purified antibody supplied in 1x PBS buffer with 0.09% (w/v) sodium azide and 2% sucrose. <i>Note that this product is shipped as lyophilized powder to China customers.</i>
Concentration:	lot specific
Purification:	Protein A purified
Conjugation:	Unconjugated
Storage:	Store at -20°C as received.
Stability:	Stable for 12 months from date of receipt.
Predicted Protein Size:	21
Gene Name:	GM2 ganglioside activator
Database Link:	NP_000396 Entrez Gene 2760 Human P17900



[View online »](#)

Background: This gene encodes a small glycolipid transport protein which acts as a substrate specific co-factor for the lysosomal enzyme beta-hexosaminidase A. Beta-hexosaminidase A, together with GM2 ganglioside activator, catalyzes the degradation of the ganglioside GM2, and other molecules containing terminal N-acetyl hexosamines. Mutations in this gene result in GM2-gangliosidosis type AB or the AB variant of Tay-Sachs disease. Alternative splicing results in multiple transcript variants. [provided by RefSeq, Nov 2009]

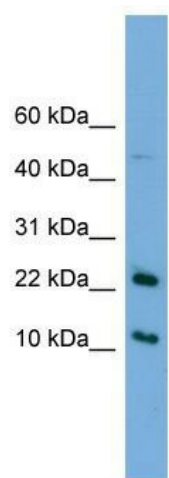
Synonyms: GM2-AP; SAP-3

Note: Immunogen Sequence Homology: Human: 100%; Pig: 83%; Guinea pig: 83%

Protein Families: Druggable Genome

Protein Pathways: Lysosome

Product images:



WB Suggested Anti-GM2A Antibody Titration: 0.2-1 ug/ml; ELISA Titer: 1: 62500; Positive Control: Hela cell lysate