

Product datasheet for **TA338961**

LIPI Rabbit Polyclonal Antibody

Product data:

Product Type:	Primary Antibodies
Applications:	WB
Recommended Dilution:	WB
Reactivity:	Human
Host:	Rabbit
Isotype:	IgG
Clonality:	Polyclonal
Immunogen:	The immunogen for anti-LIPI antibody: synthetic peptide directed towards the middle region of human LIPI. Synthetic peptide located within the following region: YFVLSIIVPDKTMMDGSFSFKLLNQLGMIEEPRLYEKNKPFYKLQEVKIL
Formulation:	Liquid. Purified antibody supplied in 1x PBS buffer with 0.09% (w/v) sodium azide and 2% sucrose. <i>Note that this product is shipped as lyophilized powder to China customers.</i>
Concentration:	lot specific
Purification:	Protein A purified
Conjugation:	Unconjugated
Storage:	Store at -20°C as received.
Stability:	Stable for 12 months from date of receipt.
Predicted Protein Size:	55 kDa
Gene Name:	lipase I
Database Link:	NP_945347 Entrez Gene 149998 Human Q6XZB0
Background:	The protein encoded by this gene is a phospholipase that hydrolyzes phosphatidic acid to produce lysophosphatidic acid. The encoded protein, which can be inhibited by sodium vanadate, may be found exclusively in sperm. Defects in this gene are a cause of susceptibility to familial hypertriglyceridemia. [provided by RefSeq, Jun 2010]
Synonyms:	CT17; LPDL; mPA-PLA1 beta; PLA1C; PRED5

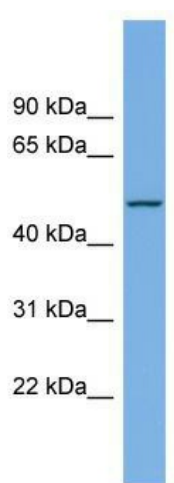


[View online »](#)

Note: Immunogen Sequence Homology: Human: 100%; Pig: 93%; Rabbit: 86%

Protein Families: Secreted Protein

Product images:



WB Suggested Anti-LIPI Antibody Titration: 0.2-1 ug/ml; Positive Control: NCI-H226 cell lysate