

Product datasheet for **TA338960**

KRTAP23-1 Rabbit Polyclonal Antibody

Product data:

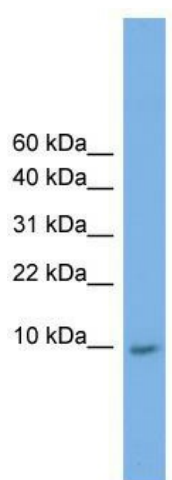
Product Type:	Primary Antibodies
Applications:	WB
Recommended Dilution:	WB
Reactivity:	Human
Host:	Rabbit
Isotype:	IgG
Clonality:	Polyclonal
Immunogen:	The immunogen for anti-KRTAP23-1 antibody: synthetic peptide directed towards the middle region of human KRTAP23-1. Synthetic peptide located within the following region: CEGYLCYSGYSRGGSSYPNSLVYSTEPLISQHLPAFLSLQGLSGDLLGN
Formulation:	Liquid. Purified antibody supplied in 1x PBS buffer with 0.09% (w/v) sodium azide and 2% sucrose.
Concentration:	lot specific
Purification:	Protein A purified
Conjugation:	Unconjugated
Storage:	Store at -20°C as received.
Stability:	Stable for 12 months from date of receipt.
Predicted Protein Size:	7 kDa
Gene Name:	keratin associated protein 23-1
Database Link:	NP_853655 Entrez Gene 337963 Human A1A580
Background:	In the hair cortex, hair keratin intermediate filaments are embedded in an interfilamentous matrix, consisting of hair keratin-associated proteins (KRTAP), which are essential for the formation of a rigid and resistant hair shaft through their extensive disulfide bond cross-linking with abundant cysteine residues of hair keratins. The matrix proteins include the high-sulfur and high-glycine-tyrosine keratins.
Synonyms:	KAP23.1



[View online »](#)

Note: Immunogen Sequence Homology: Human: 100%

Product images:



WB Suggested Anti-KRTAP23-1 Antibody Titration:
0.2-1 ug/ml; Positive Control: HepG2 cell lysate