

Product datasheet for **TA338957**

Snf1lk (SIK1) Rabbit Polyclonal Antibody

Product data:

Product Type:	Primary Antibodies
Applications:	IHC, WB
Recommended Dilution:	WB, IHC
Reactivity:	Human
Host:	Rabbit
Isotype:	IgG
Clonality:	Polyclonal
Immunogen:	The immunogen for anti-SNF1LK antibody: synthetic peptide directed towards the N terminal of human SNF1LK. Synthetic peptide located within the following region: MVIMSEFSADPAGQGQGQKPLRVGFYDIERTLGKGNFAVVKLARHRVTK
Formulation:	Liquid. Purified antibody supplied in 1x PBS buffer with 0.09% (w/v) sodium azide and 2% sucrose. <i>Note that this product is shipped as lyophilized powder to China customers.</i>
Concentration:	lot specific
Purification:	Protein A purified
Conjugation:	Unconjugated
Storage:	Store at -20°C as received.
Stability:	Stable for 12 months from date of receipt.
Predicted Protein Size:	85 kDa
Gene Name:	salt inducible kinase 1
Database Link:	NP_775490 Entrez Gene 150094 Human P57059
Background:	SNF1LK play a transient role during the earliest stages of myocardial cell differentiation and/or primitive chamber formation and may also be important for the earliest stages of skeletal muscle growth and/or differentiation. It also plays a potential role in G2/M cell cycle regulation. It inhibits CREB activity by phosphorylating and repressing the CREB-specific coactivators, CRT1-3.



[View online »](#)

Synonyms: MSK; SIK; SNF1LK

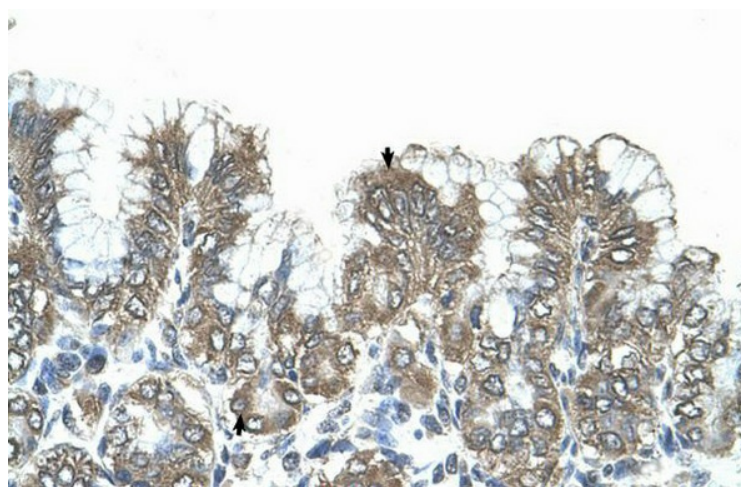
Note: Immunogen Sequence Homology: Pig: 100%; Rat: 100%; Horse: 100%; Human: 100%; Bovine: 100%; Dog: 93%; Mouse: 93%; Rabbit: 90%; Guinea pig: 85%

Protein Families: Druggable Genome, Protein Kinase

Product images:



WB Suggested Anti-SNF1LK Antibody Titration:
1.25 ug/ml; Positive Control: Jurkat cell lysate



Human Stomach