

## Product datasheet for **TA338956**

### **C21ORF13 (LCA5L) Rabbit Polyclonal Antibody**

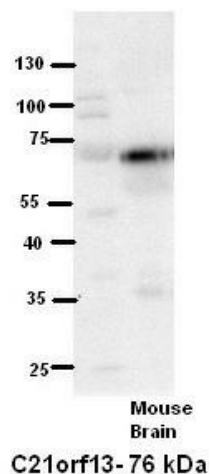
#### **Product data:**

<b>Product Type:</b>	Primary Antibodies
<b>Applications:</b>	WB
<b>Recommended Dilution:</b>	WB
<b>Reactivity:</b>	Human, Mouse
<b>Host:</b>	Rabbit
<b>Isotype:</b>	IgG
<b>Clonality:</b>	Polyclonal
<b>Immunogen:</b>	The immunogen for anti-C21orf13 antibody: synthetic peptide directed towards the N terminal of human C21orf13. Synthetic peptide located within the following region: SLADLTKTNIDEHFFGVALENNRRSAACKRSPGTGDFSRNSNASNKSVDY
<b>Formulation:</b>	Liquid. Purified antibody supplied in 1x PBS buffer with 0.09% (w/v) sodium azide and 2% sucrose.
<b>Concentration:</b>	lot specific
<b>Purification:</b>	Protein A purified
<b>Conjugation:</b>	Unconjugated
<b>Storage:</b>	Store at -20°C as received.
<b>Stability:</b>	Stable for 12 months from date of receipt.
<b>Predicted Protein Size:</b>	76 kDa
<b>Gene Name:</b>	LCA5L, lebercilin like
<b>Database Link:</b>	<a href="#">NP_689718</a> <a href="#">Entrez Gene 150082 Human</a> <a href="#">O95447</a>
<b>Background:</b>	The function of the C21orf13 protein remains unknown.
<b>Synonyms:</b>	C21orf13
<b>Note:</b>	Immunogen Sequence Homology: Human: 100%; Yeast: 75%



[View online »](#)

## Product images:



WB Suggested Anti-C21orf13 Antibody Titration:  
5% Milk; ELISA Titer: dilution: 1: 500; Positive  
Control: Mouse Brain lysate



WB Suggested Anti-C21orf13 Antibody Titration:  
0.2-1 ug/ml; ELISA Titer: 1: 1562500; Positive  
Control: MCF7 cell lysate