

## Product datasheet for TA338955

### C21ORF13 (LCA5L) Rabbit Polyclonal Antibody

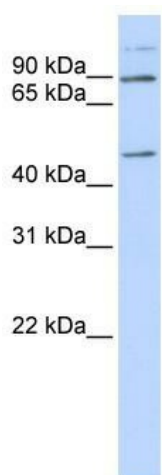
#### Product data:

Product Type:	Primary Antibodies
Applications:	WB
Recommended Dilution:	WB
Reactivity:	Human
Host:	Rabbit
Isotype:	IgG
Clonality:	Polyclonal
Immunogen:	The immunogen for anti-C21orf13 antibody: synthetic peptide directed towards the middle region of human C21orf13. Synthetic peptide located within the following region: GSEELQSKESHPLPPSQASTSHAFGDSKVTVNSIKPSSPTEGKRKIII
Formulation:	Liquid. Purified antibody supplied in 1x PBS buffer with 0.09% (w/v) sodium azide and 2% sucrose.
Concentration:	lot specific
Purification:	Protein A purified
Conjugation:	Unconjugated
Storage:	Store at -20°C as received.
Stability:	Stable for 12 months from date of receipt.
Predicted Protein Size:	76 kDa
Gene Name:	LCA5L, lebercilin like
Database Link:	<a href="#">NP_689718</a> <a href="#">Entrez Gene 150082 Human</a> <a href="#">O95447</a>
Background:	The function of the C21orf13 protein remains unknown.
Synonyms:	C21orf13
Note:	Immunogen Sequence Homology: Human: 100%; Pig: 93%; Horse: 86%; Bovine: 86%



[View online »](#)

## Product images:



WB Suggested Anti-C21orf13 Antibody Titration:  
0.2-1 ug/ml; ELISA Titer: 1: 312500; Positive  
Control: MCF7 cell lysate