

Product datasheet for **TA338954**

CRYZL1 Rabbit Polyclonal Antibody

Product data:

Product Type:	Primary Antibodies
Applications:	WB
Recommended Dilution:	WB
Reactivity:	Human
Host:	Rabbit
Isotype:	IgG
Clonality:	Polyclonal
Immunogen:	The immunogen for Anti-CRYZL1 antibody is: synthetic peptide directed towards the C-terminal region of Human CRYZL1. Synthetic peptide located within the following region: LLPHKHDIIITLLGVGGHWWTTEENLQLDPPDSHCLFLKGATLAFLNDEVW
Formulation:	Liquid. Purified antibody supplied in 1x PBS buffer with 0.09% (w/v) sodium azide and 2% sucrose.
Concentration:	lot specific
Purification:	Protein A purified
Conjugation:	Unconjugated
Storage:	Store at -20°C as received.
Stability:	Stable for 12 months from date of receipt.
Predicted Protein Size:	38 kDa
Gene Name:	crystallin zeta like 1
Database Link:	NP_665857 Entrez Gene 9946 Human O95825
Background:	This gene encodes a protein that has sequence similarity to zeta crystallin, also known as quinone oxidoreductase. This zeta crystallin-like protein also contains an NAD(P)H binding site. Alternatively spliced transcript variants have been observed but their full-length nature has not been completely determined. [provided by RefSeq, Jul 2008]
Synonyms:	4P11; QOH-1

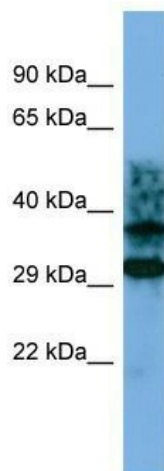


[View online »](#)

Note: Immunogen Sequence Homology: Dog: 100%; Pig: 100%; Rat: 100%; Horse: 100%; Human: 100%; Mouse: 100%; Bovine: 100%; Rabbit: 100%; Guinea pig: 93%; Zebrafish: 86%

Protein Families: Druggable Genome

Product images:



Host: Rabbit; Target Name: CRYZL1; Sample Tissue: Jurkat Whole cell lysates; Antibody Dilution: 1.0 ug/ml. CRYZL1 is supported by BioGPS gene expression data to be expressed in Jurkat