

Product datasheet for **TA338953**

TCP10L Rabbit Polyclonal Antibody

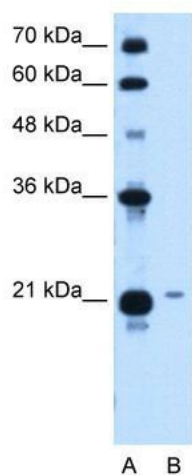
Product data:

Product Type:	Primary Antibodies
Applications:	IHC, WB
Recommended Dilution:	WB, IHC
Reactivity:	Human
Host:	Rabbit
Isotype:	IgG
Clonality:	Polyclonal
Immunogen:	The immunogen for anti-TCP10L antibody: synthetic peptide directed towards the middle region of human TCP10L. Synthetic peptide located within the following region: ASPHAGQESHLEPAFGKISPLSADEETIPKYAGHKNQSATLLGQRSS
Formulation:	Liquid. Purified antibody supplied in 1x PBS buffer with 0.09% (w/v) sodium azide and 2% sucrose. <i>Note that this product is shipped as lyophilized powder to China customers.</i>
Concentration:	lot specific
Purification:	Protein A purified
Conjugation:	Unconjugated
Storage:	Store at -20°C as received.
Stability:	Stable for 12 months from date of receipt.
Predicted Protein Size:	24 kDa
Gene Name:	t-complex 10-like
Database Link:	NP_653260 Entrez Gene 140290 Human Q8TDR4
Background:	TCP10L is a human leucine zipper protein with transcription inhibition activity.
Synonyms:	C21orf77; PRED77; TCP10A-2
Note:	Immunogen Sequence Homology: Human: 100%

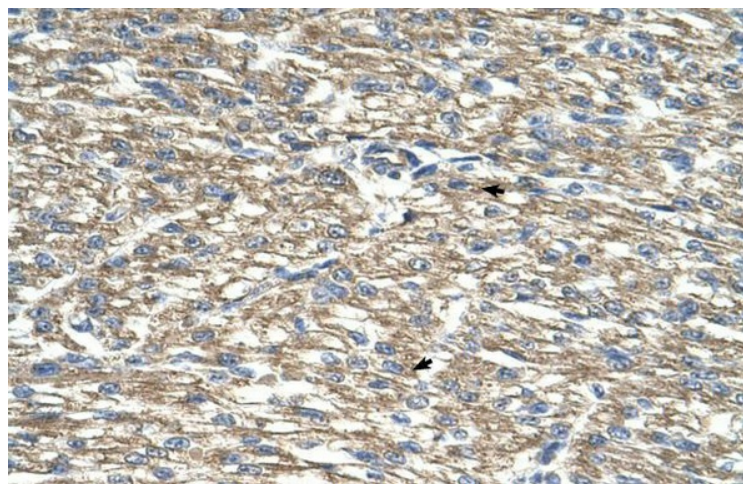


[View online »](#)

Product images:



WB Suggested Anti-TCP10L Antibody Titration:
1.25 ug/ml; Positive Control: HepG2 cell lysate



Human Heart