

Product datasheet for **TA338952**

FAM3B Rabbit Polyclonal Antibody

Product data:

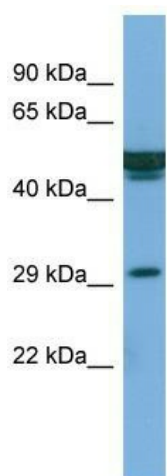
Product Type:	Primary Antibodies
Applications:	WB
Recommended Dilution:	WB
Reactivity:	Human
Host:	Rabbit
Isotype:	IgG
Clonality:	Polyclonal
Immunogen:	The immunogen for Anti-FAM3B antibody is: synthetic peptide directed towards the middle region of Human FAM3B. Synthetic peptide located within the following region: HWTPCPSDTYAYRLLSGGGRSKYAKICFEDNLLMGEQLGNVARGINIAIV
Formulation:	Liquid. Purified antibody supplied in 1x PBS buffer with 0.09% (w/v) sodium azide and 2% sucrose. <i>Note that this product is shipped as lyophilized powder to China customers.</i>
Concentration:	lot specific
Purification:	Protein A purified
Conjugation:	Unconjugated
Storage:	Store at -20°C as received.
Stability:	Stable for 12 months from date of receipt.
Predicted Protein Size:	30 kDa
Gene Name:	family with sequence similarity 3 member B
Database Link:	NP_996847 Entrez Gene 54097 Human P58499
Background:	FAM3B induces apoptosis of alpha and beta cells in a dose- and time-dependent manner.
Synonyms:	2-21; C21orf11; C21orf76; ORF9; PANDER; PRED44
Note:	Immunogen Sequence Homology: Human: 100%; Dog: 93%; Horse: 93%; Mouse: 93%; Bovine: 93%; Rabbit: 93%; Pig: 86%; Rat: 86%; Guinea pig: 86%



[View online »](#)

Protein Families: Druggable Genome, Secreted Protein, Transmembrane

Product images:



Host: Rabbit; Target Name: FAM3B; Sample
Tissue: PANC1 Whole cell lysates; Antibody
Dilution: 1.0 ug/ml