

## Product datasheet for **TA338951**

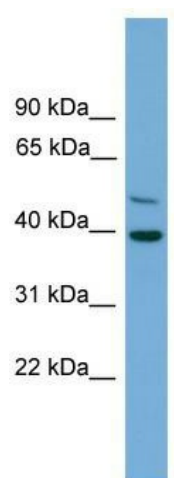
### C21orf58 Rabbit Polyclonal Antibody

#### Product data:

Product Type:	Primary Antibodies
Applications:	WB
Recommended Dilution:	WB
Reactivity:	Human
Host:	Rabbit
Isotype:	IgG
Clonality:	Polyclonal
Immunogen:	The immunogen for anti-C21orf58 antibody: synthetic peptide directed towards the N terminal of human C21orf58. Synthetic peptide located within the following region: MARSRLPATSLRKPWKLDLRQKLPSPDSGHSLLCGWSPGGKARPAGNTGAW
Formulation:	Liquid. Purified antibody supplied in 1x PBS buffer with 0.09% (w/v) sodium azide and 2% sucrose. <i>Note that this product is shipped as lyophilized powder to China customers.</i>
Concentration:	lot specific
Purification:	Protein A purified
Conjugation:	Unconjugated
Storage:	Store at -20°C as received.
Stability:	Stable for 12 months from date of receipt.
Predicted Protein Size:	35 kDa
Gene Name:	chromosome 21 open reading frame 58
Database Link:	<a href="#">NP_478060</a> <a href="#">Entrez Gene 54058 Human</a> <a href="#">P58505</a>
Background:	The function of this protein remains unknown.
Synonyms:	chromosome 21 open reading frame 58
Note:	Immunogen Sequence Homology: Human: 100%



[View online »](#)

**Product images:**

WB Suggested Anti-C21orf58 Antibody Titration:  
0.2-1 ug/ml; Positive Control: Jurkat cell lysate