

Product datasheet for **TA338950**

CYYR1 Rabbit Polyclonal Antibody

Product data:

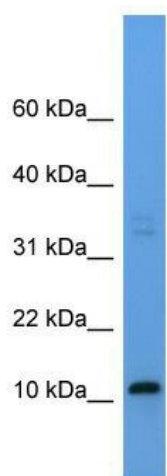
Product Type:	Primary Antibodies
Applications:	WB
Recommended Dilution:	WB
Reactivity:	Rat
Host:	Rabbit
Isotype:	IgG
Clonality:	Polyclonal
Immunogen:	The immunogen for anti-Cyyr1 antibody: synthetic peptide corresponding to a region of Rat. Synthetic peptide located within the following region: FVYAEDCRAQCGKDCRAYCCNGSTPHCCSYAYIGSILSGTAIAGIVFGI
Formulation:	Liquid. Purified antibody supplied in 1x PBS buffer with 0.09% (w/v) sodium azide and 2% sucrose. <i>Note that this product is shipped as lyophilized powder to China customers.</i>
Concentration:	lot specific
Purification:	Protein A purified
Conjugation:	Unconjugated
Storage:	Store at -20°C as received.
Stability:	Stable for 12 months from date of receipt.
Predicted Protein Size:	18 kDa
Gene Name:	cysteine and tyrosine rich 1
Database Link:	NP_443186 Entrez Gene 304138 Rat Q96J86
Background:	The function of Cyyr1 remains unknown.
Synonyms:	C21orf95
Note:	Immunogen Sequence Homology: Dog: 100%; Rat: 100%; Horse: 100%; Human: 100%; Mouse: 100%; Rabbit: 100%; Zebrafish: 79%



[View online »](#)

Protein Families: Transmembrane

Product images:



WB Suggested Anti-Cyr1 Antibody Titration: 0.2-1 ug/ml; ELISA Titer: 1: 12500; Positive Control: Rat Brain