

## Product datasheet for **TA338949**

### MRPS6 Rabbit Polyclonal Antibody

#### Product data:

Product Type:	Primary Antibodies
Applications:	WB
Recommended Dilution:	WB
Reactivity:	Human
Host:	Rabbit
Isotype:	IgG
Clonality:	Polyclonal
Immunogen:	The immunogen for anti-MRPS6 antibody: synthetic peptide directed towards the middle region of human MRPS6. Synthetic peptide located within the following region: VESMVEHLSDIDVIRGNIVKHPLTQELKECEGIVPVPLAEKLYSTKKRK
Formulation:	Liquid. Purified antibody supplied in 1x PBS buffer with 0.09% (w/v) sodium azide and 2% sucrose.
Concentration:	lot specific
Purification:	Protein A purified
Conjugation:	Unconjugated
Storage:	Store at -20°C as received.
Stability:	Stable for 12 months from date of receipt.
Predicted Protein Size:	14 kDa
Gene Name:	mitochondrial ribosomal protein S6
Database Link:	<a href="#">NP_115865</a> <a href="#">Entrez Gene 64968 Human</a> <a href="#">P82932</a>



[View online »](#)

**Background:**

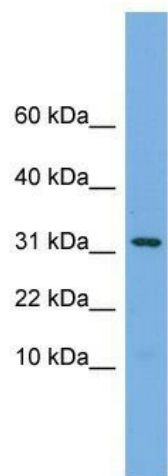
Mammalian mitochondrial ribosomal proteins are encoded by nuclear genes and help in protein synthesis within the mitochondrion. Mitochondrial ribosomes (mitoribosomes) consist of a small 28S subunit and a large 39S subunit. They have an estimated 75% protein to rRNA composition compared to prokaryotic ribosomes, where this ratio is reversed. Another difference between mammalian mitoribosomes and prokaryotic ribosomes is that the latter contain a 5S rRNA. Among different species, the proteins comprising the mitoribosome differ greatly in sequence, and sometimes in biochemical properties, which prevents easy recognition by sequence homology. This gene encodes a 28S subunit protein that belongs to the ribosomal protein S6P family. Pseudogenes corresponding to this gene are found on chromosomes 1p and 12q. [provided by RefSeq, Jul 2008]

**Synonyms:**

C21orf101; MRP-S6; RPMS6; S6mt

**Note:**

Immunogen Sequence Homology: Human: 100%; Dog: 92%; Pig: 92%; Bovine: 92%; Rat: 86%; Mouse: 86%; Horse: 85%; Rabbit: 79%; Guinea pig: 77%

**Product images:**

WB Suggested Anti-MRPS6 Antibody Titration:  
0.2-1 ug/ml; Positive Control: Jurkat cell lysate