

Product datasheet for **TA338948**

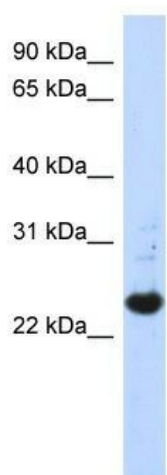
C21ORF56 (SPATC1L) Rabbit Polyclonal Antibody

Product data:

Product Type:	Primary Antibodies
Applications:	WB
Recommended Dilution:	WB
Reactivity:	Human
Host:	Rabbit
Isotype:	IgG
Clonality:	Polyclonal
Immunogen:	The immunogen for anti-C21orf56 antibody: synthetic peptide directed towards the N terminal of human C21orf56. Synthetic peptide located within the following region: MVRPKKVCFSSESLPTGDRTRRSYYLNEIQSFAGA EKDARVVGEIAFQLD
Formulation:	Liquid. Purified antibody supplied in 1x PBS buffer with 0.09% (w/v) sodium azide and 2% sucrose. <i>Note that this product is shipped as lyophilized powder to China customers.</i>
Concentration:	lot specific
Purification:	Protein A purified
Conjugation:	Unconjugated
Storage:	Store at -20°C as received.
Stability:	Stable for 12 months from date of receipt.
Predicted Protein Size:	21 kDa
Gene Name:	spermatogenesis and centriole associated 1-like
Database Link:	NP_115637 Entrez Gene 84221 Human Q9H0A9
Background:	The specific function of C21orf56 is not yet known.
Synonyms:	C21orf56
Note:	Immunogen Sequence Homology: Human: 100%; Dog: 93%; Horse: 93%; Bovine: 93%; Pig: 86%; Rat: 86%; Mouse: 86%; Guinea pig: 79%



[View online »](#)

Product images:

WB Suggested Anti-C21orf56 Antibody Titration:
0.2-1 ug/ml; ELISA Titer: 1: 312500; Positive
Control: Transfected 293T