

Product datasheet for **TA338946**

LRRC3 Rabbit Polyclonal Antibody

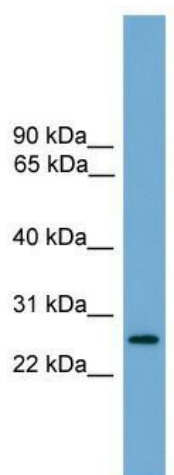
Product data:

Product Type:	Primary Antibodies
Applications:	WB
Recommended Dilution:	WB
Reactivity:	Human
Host:	Rabbit
Isotype:	IgG
Clonality:	Polyclonal
Immunogen:	The immunogen for anti-LRRC3 antibody: synthetic peptide directed towards the middle region of human LRRC3. Synthetic peptide located within the following region: TFAGLAGGLRLLDLSYNRIQRIPKDALGKLSAKIRLSHNPLHCECALQEA
Formulation:	Liquid. Purified antibody supplied in 1x PBS buffer with 0.09% (w/v) sodium azide and 2% sucrose.
Concentration:	lot specific
Purification:	Protein A purified
Conjugation:	Unconjugated
Storage:	Store at -20°C as received.
Stability:	Stable for 12 months from date of receipt.
Predicted Protein Size:	25 kDa
Gene Name:	leucine rich repeat containing 3
Database Link:	NP_112153 Entrez Gene 81543 Human Q9BY71
Background:	The function of this protein remains unknown.
Synonyms:	C21orf102
Note:	Immunogen Sequence Homology: Dog: 100%; Rat: 100%; Horse: 100%; Human: 100%; Mouse: 100%; Rabbit: 100%; Pig: 93%; Bovine: 93%; Guinea pig: 93%
Protein Families:	Transmembrane



[View online »](#)

Product images:



WB Suggested Anti-LRRC3 Antibody Titration: 0.2-1 ug/ml; Positive Control: Human brain