

## Product datasheet for **TA338943**

### CFAP298 Rabbit Polyclonal Antibody

#### Product data:

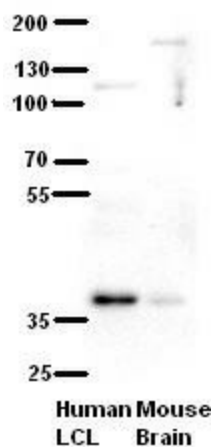
Product Type:	Primary Antibodies
Applications:	WB
Recommended Dilution:	WB
Reactivity:	Human, Mouse
Host:	Rabbit
Isotype:	IgG
Clonality:	Polyclonal
Immunogen:	The immunogen for anti-C21orf59 antibody: synthetic peptide directed towards the N terminal of human C21orf59. Synthetic peptide located within the following region: VLLHVKRGDESQFLLQAPGSTELEELTVQVARVYNGRLKVRQLCSEMEEL
Formulation:	Liquid. Purified antibody supplied in 1x PBS buffer with 0.09% (w/v) sodium azide and 2% sucrose. <i>Note that this product is shipped as lyophilized powder to China customers.</i>
Concentration:	lot specific
Purification:	Protein A purified
Conjugation:	Unconjugated
Storage:	Store at -20°C as received.
Stability:	Stable for 12 months from date of receipt.
Predicted Protein Size:	33 kDa
Gene Name:	chromosome 21 open reading frame 59
Database Link:	<a href="#">NP_067077</a> <a href="#">Entrez Gene 56683 Human P57076</a>
Background:	This gene a protein plays a critical role in dynein arm assembly and motile cilia function. Mutations in this gene result in primary ciliary dyskinesia. [provided by RefSeq, Nov 2013]
Synonyms:	C21orf48; CILD26; FBB18



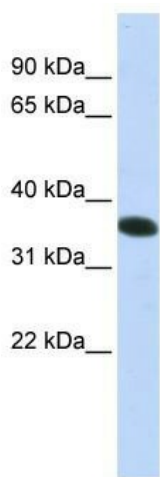
[View online »](#)

**Note:** Immunogen Sequence Homology: Pig: 100%; Rat: 100%; Horse: 100%; Human: 100%; Mouse: 100%; Guinea pig: 100%; Bovine: 93%; Rabbit: 93%; Dog: 92%

**Product images:**



WB Suggested Anti-C21orf59 Antibody Titration: 5% Milk; ELISA Titer: dilution: 1: 500; Positive Control: human LCL and mouse brains



WB Suggested Anti-C21orf59 Antibody Titration: 0.2-1 ug/ml; ELISA Titer: 1: 62500; Positive Control: Jurkat cell lysate. C21orf59 is supported by BioGPS gene expression data to be expressed in Jurkat