

Product datasheet for **TA338942**

RIPK4 Rabbit Polyclonal Antibody

Product data:

Product Type:	Primary Antibodies
Applications:	WB
Recommended Dilution:	WB
Reactivity:	Human
Host:	Rabbit
Isotype:	IgG
Clonality:	Polyclonal
Immunogen:	The immunogen for anti-RIPK4 antibody: synthetic peptide directed towards the N terminal of human RIPK4. Synthetic peptide located within the following region: DGLFGTIAYLPPERIREKSRLFDTKHDVYSFAIWIWGVLTQKKPFADEKN
Formulation:	Liquid. Purified antibody supplied in 1x PBS buffer with 0.09% (w/v) sodium azide and 2% sucrose. <i>Note that this product is shipped as lyophilized powder to China customers.</i>
Concentration:	lot specific
Purification:	Protein A purified
Conjugation:	Unconjugated
Storage:	Store at -20°C as received.
Stability:	Stable for 12 months from date of receipt.
Predicted Protein Size:	86 kDa
Gene Name:	receptor interacting serine/threonine kinase 4
Database Link:	NP_065690 Entrez Gene 54101 Human
Background:	The protein encoded by this gene is a serine/threonine protein kinase that interacts with protein kinase C-delta. The encoded protein can also activate NFkappaB and is required for keratinocyte differentiation. This kinase undergoes autophosphorylation. [provided by RefSeq, Jul 2008]
Synonyms:	ANKK2; ANKRD3; DIK; NKRD3; PKK; PPS2; RIP4

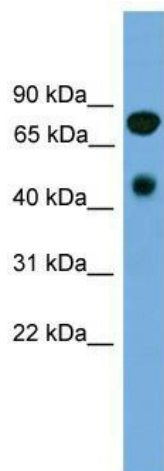


[View online »](#)

Note: Immunogen Sequence Homology: Dog: 100%; Pig: 100%; Rat: 100%; Horse: 100%; Human: 100%; Mouse: 100%; Bovine: 100%; Rabbit: 100%; Guinea pig: 100%; Zebrafish: 77%

Protein Families: Druggable Genome, Protein Kinase

Product images:



WB Suggested Anti-RIPK4 Antibody Titration: 0.2-1 ug/ml; Positive Control: Human heart