

Product datasheet for TA338940

C21orf62 Rabbit Polyclonal Antibody

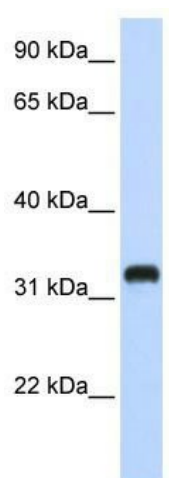
Product data:

Product Type:	Primary Antibodies
Applications:	WB
Recommended Dilution:	WB
Reactivity:	Human
Host:	Rabbit
Isotype:	IgG
Clonality:	Polyclonal
Immunogen:	The immunogen for anti-C21orf62 antibody: synthetic peptide directed towards the middle region of human C21orf62. Synthetic peptide located within the following region: STNTLPTEYLAICGLKRLRINMEAKHPFPEQSLLIHSGGSDSREKPMWL
Formulation:	Liquid. Purified antibody supplied in 1x PBS buffer with 0.09% (w/v) sodium azide and 2% sucrose. <i>Note that this product is shipped as lyophilized powder to China customers.</i>
Concentration:	lot specific
Purification:	Protein A purified
Conjugation:	Unconjugated
Storage:	Store at -20°C as received.
Stability:	Stable for 12 months from date of receipt.
Predicted Protein Size:	28 kDa
Gene Name:	chromosome 21 open reading frame 62
Database Link:	NP_062542 Entrez Gene 56245 Human Q9NYP8
Background:	The exact function of C21orf62 remains unknown.
Synonyms:	B37; C21orf120; PRED81
Note:	Immunogen Sequence Homology: Rat: 100%; Human: 100%



[View online »](#)

Product images:



WB Suggested Anti-C21orf62 Antibody Titration:
0.2-1 ug/ml; ELISA Titer: 1: 1562500; Positive
Control: 293T cell lysate