

Product datasheet for **TA338939**

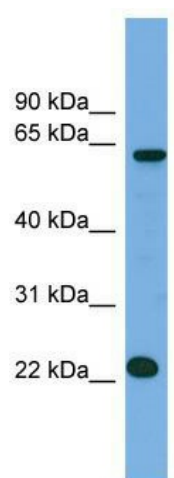
C21orf45 (MIS18A) Rabbit Polyclonal Antibody

Product data:

Product Type:	Primary Antibodies
Applications:	WB
Recommended Dilution:	WB
Reactivity:	Human
Host:	Rabbit
Isotype:	IgG
Clonality:	Polyclonal
Immunogen:	The immunogen for anti-C21orf45 antibody: synthetic peptide directed towards the N terminal of human C21orf45. Synthetic peptide located within the following region: MAGVRSRLRCSRGCAGGCECGDKGKCSDSLLGKRLSEDSSRHQLLQKWAS
Formulation:	Liquid. Purified antibody supplied in 1x PBS buffer with 0.09% (w/v) sodium azide and 2% sucrose. <i>Note that this product is shipped as lyophilized powder to China customers.</i>
Concentration:	lot specific
Purification:	Protein A purified
Conjugation:	Unconjugated
Storage:	Store at -20°C as received.
Stability:	Stable for 12 months from date of receipt.
Predicted Protein Size:	26 kDa
Gene Name:	MIS18 kinetochore protein A
Database Link:	NP_061817 Entrez Gene 54069 Human Q9NYP9
Background:	The function of this protein remains unknown.
Synonyms:	B28; C21orf45; C21orf46; FASP1; hMis18alpha; MIS18alpha
Note:	Immunogen Sequence Homology: Dog: 100%; Rat: 100%; Horse: 100%; Human: 100%; Bovine: 100%; Rabbit: 100%



[View online »](#)

Product images:

WB Suggested Anti-C21orf45 Antibody Titration:
0.2-1 ug/ml; ELISA Titer: 1: 312500; Positive
Control: NCI-H226 cell lysate