

Product datasheet for **TA338936**

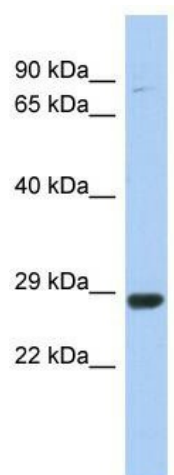
C21orf91 Rabbit Polyclonal Antibody

Product data:

Product Type:	Primary Antibodies
Applications:	WB
Recommended Dilution:	WB
Reactivity:	Human
Host:	Rabbit
Isotype:	IgG
Clonality:	Polyclonal
Immunogen:	The immunogen for anti-C21orf91 antibody: synthetic peptide directed towards the middle region of human C21orf91. Synthetic peptide located within the following region: QGCPRSKLSKSTYEEVKTILSKKINWIVQYAQNKDLDSDSECSKNPQHHL
Formulation:	Liquid. Purified antibody supplied in 1x PBS buffer with 0.09% (w/v) sodium azide and 2% sucrose. <i>Note that this product is shipped as lyophilized powder to China customers.</i>
Concentration:	lot specific
Purification:	Protein A purified
Conjugation:	Unconjugated
Storage:	Store at -20°C as received.
Stability:	Stable for 12 months from date of receipt.
Predicted Protein Size:	25 kDa
Gene Name:	chromosome 21 open reading frame 91
Database Link:	NP_001093891 Entrez Gene 54149 Human Q9NYK6
Background:	The specific function of this protein remains unknown.
Synonyms:	C21orf14; C21orf38; CSSG1; EURL; YG81
Note:	Immunogen Sequence Homology: Dog: 100%; Pig: 100%; Rat: 100%; Horse: 100%; Human: 100%; Bovine: 100%; Rabbit: 100%; Guinea pig: 100%; Mouse: 79%



[View online »](#)

Product images:

WB Suggested Anti-C21orf91 Antibody Titration:
0.2-1 ug/ml; ELISA Titer: 1: 62500; Positive
Control: THP-1 cell lysate