

Product datasheet for **TA338935**

MORC3 Rabbit Polyclonal Antibody

Product data:

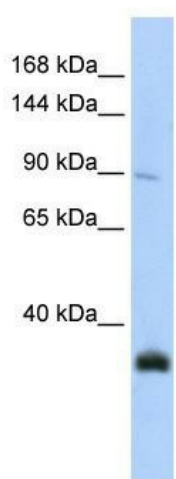
Product Type:	Primary Antibodies
Applications:	WB
Recommended Dilution:	WB
Reactivity:	Human
Host:	Rabbit
Isotype:	IgG
Clonality:	Polyclonal
Immunogen:	The immunogen for anti-MORC3 antibody: synthetic peptide directed towards the N terminal of human MORC3. Synthetic peptide located within the following region: KLLAELDAIIGKKGTRIIWNLRSYKNATEFDFEKDYDIRIPEDLDEIT
Formulation:	Liquid. Purified antibody supplied in 1x PBS buffer with 0.09% (w/v) sodium azide and 2% sucrose. <i>Note that this product is shipped as lyophilized powder to China customers.</i>
Concentration:	lot specific
Purification:	Protein A purified
Conjugation:	Unconjugated
Storage:	Store at -20°C as received.
Stability:	Stable for 12 months from date of receipt.
Predicted Protein Size:	107 kDa
Gene Name:	MORC family CW-type zinc finger 3
Database Link:	NP_056173 Entrez Gene 23515 Human Q14149
Background:	This gene encodes a protein that localizes to the nuclear matrix. The protein also has RNA binding activity, and has a predicted coiled-coil domain. [provided by RefSeq, Jul 2008]
Synonyms:	NXP2; ZCW5; ZCWCC3



[View online »](#)

Note: Immunogen Sequence Homology: Pig: 100%; Human: 100%; Mouse: 100%; Guinea pig: 100%; Rat: 93%; Rabbit: 93%; Dog: 86%; Bovine: 86%; Horse: 79%

Product images:



WB Suggested Anti-MORC3 Antibody Titration:
0.2-1 ug/ml; ELISA Titer: 1: 312500; Positive
Control: Jurkat cell lysate