

## Product datasheet for **TA338932**

### DIP2A Rabbit Polyclonal Antibody

#### Product data:

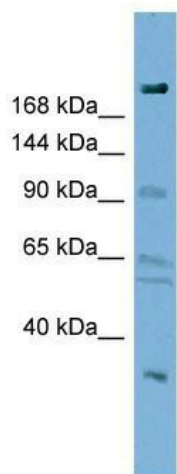
Product Type:	Primary Antibodies
Applications:	WB
Recommended Dilution:	WB
Reactivity:	Human
Host:	Rabbit
Isotype:	IgG
Clonality:	Polyclonal
Immunogen:	The immunogen for anti-DIP2A antibody: synthetic peptide directed towards the N terminal of human DIP2A. Synthetic peptide located within the following region: PLKEFFVDDFEELLEVQQPDPNQPKPEGSETSVLRGEPLTAGVPRPPSLL
Formulation:	Liquid. Purified antibody supplied in 1x PBS buffer with 0.09% (w/v) sodium azide and 2% sucrose. <i>Note that this product is shipped as lyophilized powder to China customers.</i>
Concentration:	lot specific
Purification:	Protein A purified
Conjugation:	Unconjugated
Storage:	Store at -20°C as received.
Stability:	Stable for 12 months from date of receipt.
Predicted Protein Size:	170 kDa
Gene Name:	disco interacting protein 2 homolog A
Database Link:	<a href="#">NP_055966</a> <a href="#">Entrez Gene 23181 Human</a> <a href="#">Q14689</a>
Background:	The protein encoded by this gene may be involved in axon patterning in the central nervous system. This gene is not highly expressed. Several transcript variants encoding different isoforms have been found for this gene. [provided by RefSeq, Mar 2009]
Synonyms:	C21orf106; DIP2



[View online »](#)

**Note:** Immunogen Sequence Homology: Dog: 100%; Pig: 100%; Rat: 100%; Horse: 100%; Human: 100%; Mouse: 100%; Bovine: 100%; Rabbit: 100%; Guinea pig: 100%; Zebrafish: 79%

**Product images:**



WB Suggested Anti-DIP2A Antibody Titration: 0.2-1 ug/ml; Positive Control: HT1080 cell lysate