

## Product datasheet for **TA338931**

### RRP1B Rabbit Polyclonal Antibody

#### Product data:

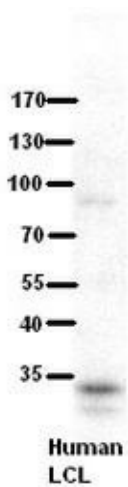
Product Type:	Primary Antibodies
Applications:	WB
Recommended Dilution:	WB
Reactivity:	Human
Host:	Rabbit
Isotype:	IgG
Clonality:	Polyclonal
Immunogen:	The immunogen for anti-RRP1B antibody: synthetic peptide directed towards the middle region of human RRP1B. Synthetic peptide located within the following region: VTFGLNRNMTAEFKKTDKSILVSPGSRVAFDPEQKPLHGVLTPTSSP
Formulation:	Liquid. Purified antibody supplied in 1x PBS buffer with 0.09% (w/v) sodium azide and 2% sucrose. <i>Note that this product is shipped as lyophilized powder to China customers.</i>
Concentration:	lot specific
Purification:	Protein A purified
Conjugation:	Unconjugated
Storage:	Store at -20°C as received.
Stability:	Stable for 12 months from date of receipt.
Predicted Protein Size:	84 kDa
Gene Name:	ribosomal RNA processing 1B
Database Link:	<a href="#">NP_055871</a> <a href="#">Entrez Gene 23076 Human Q14684</a>
Background:	RRP1B belongs to the RRP1 family. It may be a novel susceptibility gene for breast cancer progression and metastasis.
Synonyms:	KIAA0179; Nnp1; NNP1L; PPP1R136; RRP1



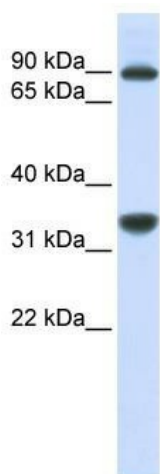
[View online »](#)

**Note:** Immunogen Sequence Homology: Dog: 100%; Pig: 100%; Rat: 100%; Horse: 100%; Human: 100%; Bovine: 100%; Rabbit: 100%; Guinea pig: 100%; Mouse: 93%

**Product images:**



WB Suggested Anti-RRP1B Antibody Titration: 5% Milk; ELISA Titer: dilution: 1: 500; Positive Control: human LCL



WB Suggested Anti-RRP1B Antibody Titration: 0.2-1 ug/ml; ELISA Titer: 1: 312500; Positive Control: MCF7 cell lysate. RRP1B is strongly supported by BioGPS gene expression data to be expressed in Human MCF7 cells