

## Product datasheet for **TA338928**

### TCP1 theta (CCT8) Rabbit Polyclonal Antibody

#### Product data:

Product Type:	Primary Antibodies
Applications:	WB
Recommended Dilution:	WB
Reactivity:	Human, Mouse
Host:	Rabbit
Isotype:	IgG
Clonality:	Polyclonal
Immunogen:	The immunogen for anti-CCT8 antibody: synthetic peptide directed towards the C terminal of human CCT8. Synthetic peptide located within the following region: DMLEAGILDTYLGKYWAIKLATNAAVTVLRVDQIIMAKPAGGPKPPSGKK
Formulation:	Liquid. Purified antibody supplied in 1x PBS buffer with 0.09% (w/v) sodium azide and 2% sucrose. <i>Note that this product is shipped as lyophilized powder to China customers.</i>
Concentration:	lot specific
Purification:	Protein A purified
Conjugation:	Unconjugated
Storage:	Store at -20°C as received.
Stability:	Stable for 12 months from date of receipt.
Predicted Protein Size:	59 kDa
Gene Name:	chaperonin containing TCP1 subunit 8
Database Link:	<a href="#">NP_006576</a> <a href="#">Entrez Gene 12469 Mouse</a> <a href="#">Entrez Gene 10694 Human</a> <a href="#">P50990</a>
Background:	This gene encodes the theta subunit of the CCT chaperonin, which is abundant in the eukaryotic cytosol and may be involved in the transport and assembly of newly synthesized proteins. Alternative splicing results in multiple transcript variants of this gene. A pseudogene related to this gene is located on chromosome 1. [provided by RefSeq, Sep 2013]
Synonyms:	C21orf112; Cctq; D21S246; PRED71



[View online »](#)

**Note:** Immunogen Sequence Homology: Dog: 100%; Pig: 100%; Rat: 100%; Horse: 100%; Human: 100%; Mouse: 100%; Yeast: 100%; Bovine: 100%; Guinea pig: 100%; Zebrafish: 86%

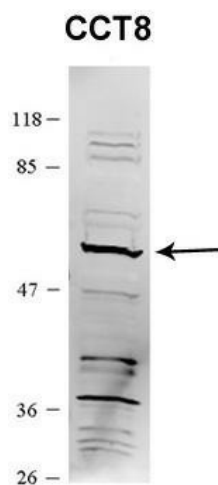
**Protein Families:** Druggable Genome

**Product images:**



WB Suggested Anti-CCT8 Antibody Titration: 0.2-1 ug/ml; Positive Control: Jurkat cell lysate. CCT8 is strongly supported by BioGPS gene expression data to be expressed in Jurkat

CCT8 antibody - C-terminal region validated by WB using human lymphoblastoid & mouse brain



CCT8 antibody - C-terminal region validated by WB using HEK 293T at 1: 1, 000 dilution for antibody samples and 1: 10, 000 for secondary antibodies. CCT8 is strongly supported by BioGPS gene expression data to be expressed in Human HEK293T cells