

## Product datasheet for TA338925

### p60 CAF1 (CHAF1B) Rabbit Polyclonal Antibody

#### Product data:

Product Type:	Primary Antibodies
Applications:	WB
Recommended Dilution:	WB
Reactivity:	Human, Mouse
Host:	Rabbit
Isotype:	IgG
Clonality:	Polyclonal
Immunogen:	The immunogen for anti-CHAF1B antibody: synthetic peptide directed towards the N terminal of human CHAF1B. Synthetic peptide located within the following region: KVITCEIAWHNKEPVYSLDFQHGHTAGRIHRLASAGVDTNVRWVKVEKGPD
Formulation:	Liquid. Purified antibody supplied in 1x PBS buffer with 0.09% (w/v) sodium azide and 2% sucrose. <i>Note that this product is shipped as lyophilized powder to China customers.</i>
Concentration:	lot specific
Purification:	Protein A purified
Conjugation:	Unconjugated
Storage:	Store at -20°C as received.
Stability:	Stable for 12 months from date of receipt.
Predicted Protein Size:	61 kDa
Gene Name:	chromatin assembly factor 1 subunit B
Database Link:	<a href="#">NP_005432</a> <a href="#">Entrez Gene 110749 Mouse</a> <a href="#">Entrez Gene 8208 Human</a> <a href="#">Q13112</a>



[View online »](#)

**Background:**

Chromatin assembly factor I (CAF-I) is required for the assembly of histone octamers onto newly-replicated DNA. CAF-I is composed of three protein subunits, p50, p60, and p150. The protein encoded by this gene corresponds to the p60 subunit and is required for chromatin assembly after replication. The encoded protein is differentially phosphorylated in a cell cycle-dependent manner. In addition, it is normally found in the nucleus except during mitosis, when it is released into the cytoplasm. This protein is a member of the WD-repeat HIR1 family and may also be involved in DNA repair. [provided by RefSeq, Jul 2008]

**Synonyms:**

CAF-1; CAF-IP60; CAF1; CAF1A; CAF1P60; MPHOSPH7; MPP7

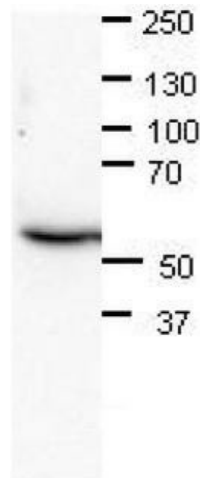
**Note:**

Immunogen Sequence Homology: Dog: 100%; Pig: 100%; Rat: 100%; Horse: 100%; Human: 100%; Mouse: 100%; Rabbit: 100%; Bovine: 92%; Zebrafish: 92%; Guinea pig: 86%

**Protein Families:**

Druggable Genome, Transcription Factors

**Product images:**

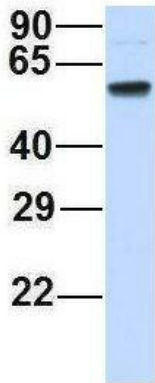


CHAF1B antibody - N-terminal region validated by WB using Mouse brains at 1: 1000.



WB Suggested Anti-CHAF1B Antibody Titration: 0.2-1 ug/ml; ELISA Titer: 1: 1562500; Positive Control: Human Liver

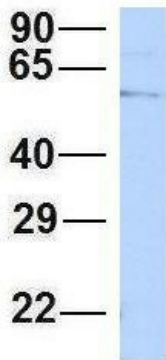
## CHAF1B



Rabbit Anti-CHAF1B  
 Sample Type: Human Adult Placenta  
 Antibody Concentration: 1ug/mL

Host: Rabbit; Target Name: CHAF1B; Sample Tissue: Human Adult Placenta; Antibody Dilution: 1.0 ug/ml

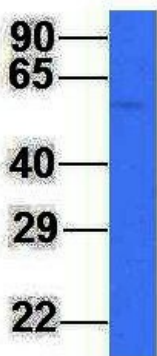
## CHAF1B



Rabbit Anti-CHAF1B  
 Sample Type: Human HepG2  
 Antibody Concentration: 1ug/mL

Host: Rabbit; Target Name: CHAF1B; Sample Tissue: HepG2; Antibody Dilution: 1.0 ug/ml. CHAF1B is supported by BioGPS gene expression data to be expressed in HepG2

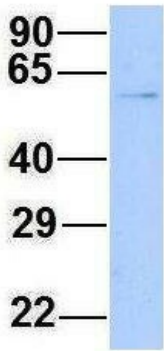
## CHAF1B



Rabbit Anti-CHAF1B  
 Sample Type: Human Jurkat  
 Antibody Concentration: 1ug/mL

Host: Rabbit; Target Name: CHAF1B; Sample Tissue: Jurkat; Antibody Dilution: 1.0 ug/ml. CHAF1B is supported by BioGPS gene expression data to be expressed in Jurkat

# CHAF1B



Rabbit Anti-CHAF1B  
Sample Type: Human 293T  
Antibody Concentration: 1ug/mL

Host: Rabbit; Target Name: CHAF1B; Sample Tissue: 293T; Antibody Dilution: 1.0 ug/ml. CHAF1B is supported by BioGPS gene expression data to be expressed in HEK293T