

Product datasheet for **TA338924**

PWP2H (PWP2) Rabbit Polyclonal Antibody

Product data:

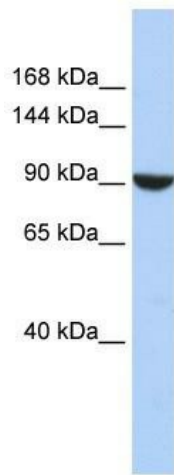
| | |
|--------------------------------|--|
| Product Type: | Primary Antibodies |
| Applications: | WB |
| Recommended Dilution: | WB |
| Reactivity: | Human |
| Host: | Rabbit |
| Isotype: | IgG |
| Clonality: | Polyclonal |
| Immunogen: | The immunogen for anti-PWP2 antibody: synthetic peptide directed towards the middle region of human PWP2. Synthetic peptide located within the following region: VQTGSIEGRHDLKTGRKELDKITAKHAAKKGKAFTALCYSADGHSILAGGM |
| Formulation: | Liquid. Purified antibody supplied in 1x PBS buffer with 0.09% (w/v) sodium azide and 2% sucrose. <i>Note that this product is shipped as lyophilized powder to China customers.</i> |
| Concentration: | lot specific |
| Purification: | Protein A purified |
| Conjugation: | Unconjugated |
| Storage: | Store at -20°C as received. |
| Stability: | Stable for 12 months from date of receipt. |
| Predicted Protein Size: | 102 kDa |
| Gene Name: | PWP2 periodic tryptophan protein homolog (yeast) |
| Database Link: | NP_005040 Entrez Gene 5822 Human Q15269 |
| Background: | PWP2 belongs to the WD repeat PWP2 family. It contains 14 WD repeats. The exact function of PWP2 is not known. |
| Synonyms: | EHOc-17; PWP2H; UTP1 |



[View online »](#)

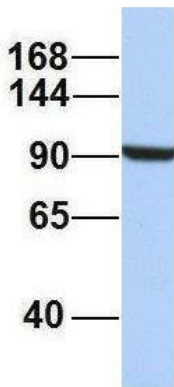
Note: Immunogen Sequence Homology: Dog: 100%; Rat: 100%; Horse: 100%; Human: 100%; Mouse: 100%; Bovine: 100%; Pig: 93%; Guinea pig: 93%

Product images:



WB Suggested Anti-PWP2 Antibody Titration: 0.2-1 ug/ml; ELISA Titer: 1: 62500; Positive Control: HepG2 cell lysate

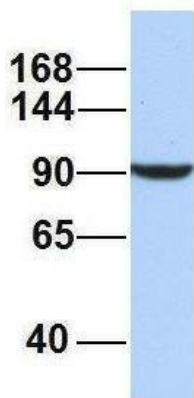
PWP2



Rabbit Anti-PWP2
Sample Type: Human Jurkat
Antibody Concentration: 1ug/mL

Host: Rabbit; Target Name: PWP2; Sample Tissue: Jurkat; Antibody Dilution: 1.0 ug/ml. PWP2 is supported by BioGPS gene expression data to be expressed in Jurkat

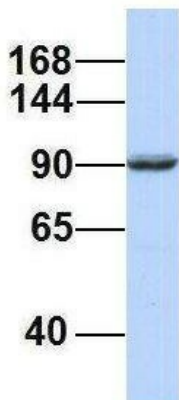
PWP2



Rabbit Anti-PWP2
 Sample Type: Human MCF7
 Antibody Concentration: 1ug/mL

Host: Rabbit; Target Name: PWP2; Sample Tissue: MCF7; Antibody Dilution: 1.0 ug/ml. PWP2 is supported by BioGPS gene expression data to be expressed in MCF7

PWP2



Rabbit Anti-PWP2
 Sample Type: Human 721_B
 Antibody Concentration: 1ug/mL

Host: Rabbit; Target Name: PWP2; Sample Tissue: 721_B; Antibody Dilution: 1.0 ug/ml. PWP2 is supported by BioGPS gene expression data to be expressed in 721_B