

Product datasheet for **TA338923**

CFAP410 Rabbit Polyclonal Antibody

Product data:

Product Type:	Primary Antibodies
Applications:	WB
Recommended Dilution:	WB
Reactivity:	Human
Host:	Rabbit
Isotype:	IgG
Clonality:	Polyclonal
Immunogen:	The immunogen for Anti-C21orf2 antibody is: synthetic peptide directed towards the C-terminal region of Human C21orf2. Synthetic peptide located within the following region: DPLDSEEEATSGAQDERGLKPPSRGQFP SLSARDASSSHRGRNVLTAILL
Formulation:	Liquid. Purified antibody supplied in 1x PBS buffer with 0.09% (w/v) sodium azide and 2% sucrose. <i>Note that this product is shipped as lyophilized powder to China customers.</i>
Concentration:	lot specific
Purification:	Protein A purified
Conjugation:	Unconjugated
Storage:	Store at -20°C as received.
Stability:	Stable for 12 months from date of receipt.
Predicted Protein Size:	23 kDa
Gene Name:	chromosome 21 open reading frame 2
Database Link:	NP_004919 Entrez Gene 755 Human O43822
Background:	Four alternatively spliced transcript variants encoding four different isoforms have been found for this nuclear gene. All isoforms contain leucine-rich repeats. Three of these isoforms are mitochondrial proteins and one of them lacks the target peptide, so is not located in mitochondrion. This gene is down-regulated in Down syndrome (DS) brain, which may represent mitochondrial dysfunction in DS patients. [provided by RefSeq, Sep 2012]

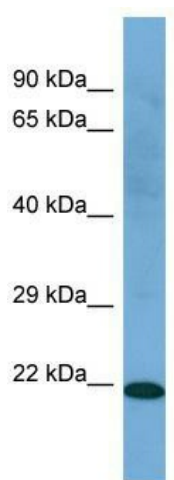


[View online »](#)

Synonyms: A2; LRRC76; YF5

Note: Immunogen Sequence Homology: Human: 100%

Product images:



Host: Rabbit; Target Name: C21orf2; Sample
Tissue: THP-1 Whole cell lysates; Antibody
Dilution: 1.0 ug/ml